

ATP6V1D antibody



Catalog Number: 108310

Product name

ATP6V1D antibody

WB: 1:500-1:5000

IP: 1:200-1:2000

Specificity

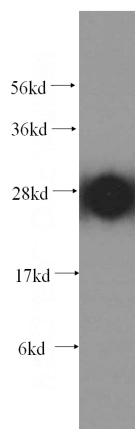
Human, Mouse, Rat; other species not tested.

IHC: 1:20-1:200

Antibody description

ATP6V1D Rabbit Polyclonal antibody. Positive FC detected in HeLa cells. Positive IHC detected in human lung cancer tissue. Positive IP detected in mouse lung tissue. Positive WB detected in human brain tissue, mouse lung tissue, mouse skeletal muscle tissue. Observed molecular weight by Western-blot: 28 kDa

Validations



Preparation

This antibody was obtained by immunization of ATP6V1D recombinant protein (Accession Number: NM_015994). Purification method: Antigen affinity purified.

human brain tissue were subjected to SDS PAGE followed by western blot with Catalog No:108310(ATP6V1D antibody) at dilution of 1:500

Formulation

PBS with 0.02% sodium azide and 50% glycerol pH 7.3.

Storage

Store at -20°C. DO NOT ALIQUOT

Clonality

Polyclonal

Ig Type

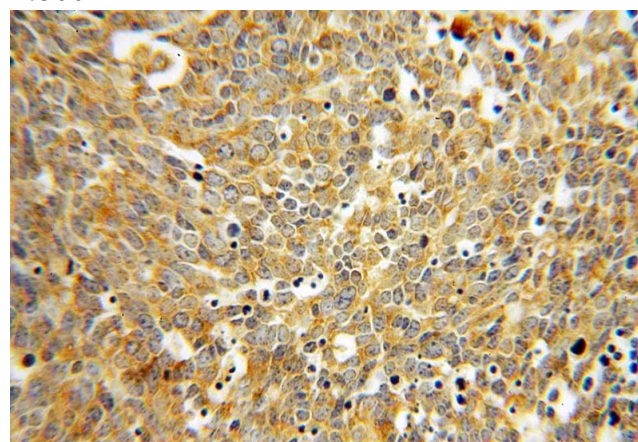
Rabbit IgG

Applications

ELISA, WB, IHC, FC, IP

Dilutions

Recommended Dilution:



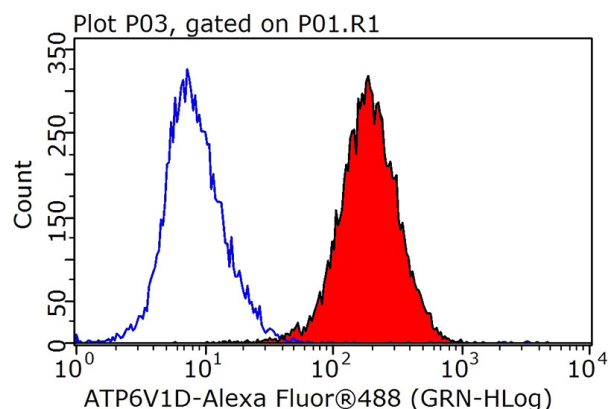
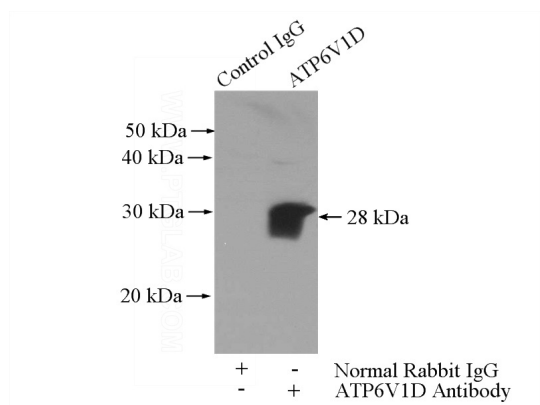
Immunohistochemical of paraffin-embedded human lung cancer using Catalog No:108310(ATP6V1D antibody) at dilution of 1:100 (under 40x lens)

Immunohistochemical of paraffin-embedded human lung cancer using Catalog No:108310(ATP6V1D antibody) at dilution of 1:100 (under 10x lens)

ATP6V1D antibody



Catalog Number: 108310



IP Result of anti-ATP6V1D (IP:Catalog No:108310, 4ug; Detection:Catalog No:108310 1:500) with mouse lung tissue lysate 4000ug.

1X10⁶ HeLa cells were stained with 0.2ug ATP6V1D antibody (Catalog No:108310, red) and control antibody (blue). Fixed with 90% MeOH blocked with 3% BSA (30 min). Alexa Fluor 488-conjugated AffiniPure Goat Anti-Rabbit IgG(H+L) with dilution 1:1000.