

Anti-Bcl-2 Rabbit antibody

Catalog Number: 167310

Product name

Anti-Bcl-2 Rabbit antibody

Specificity

Human, Mouse

Antibody description

Bcl-2 Rabbit polyclonal antibody

Preparation

Antigen: A synthesized peptide derived from human Bcl-2

Formulation

Rabbit IgG in phosphate buffered saline , pH 7.4, 150mM NaCl, 0.02% sodium azide and 50% glycerol.

Storage

Store at 4°C short term. Store at -20°C long term. Avoid freeze / thaw cycle.

Clonality

Polyclonal

Ig Type

Rabbit IgG

Applications

WB, IHC-P, ICC/IF, FC

Dilutions

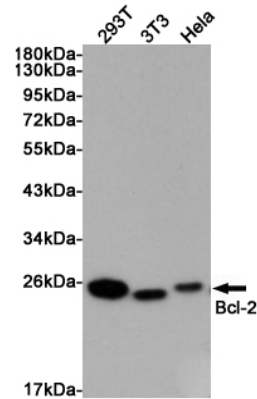
WB: 1/1000-1/2000

IHC: 1/50-1/200

ICC/IF: 1/50-1/200

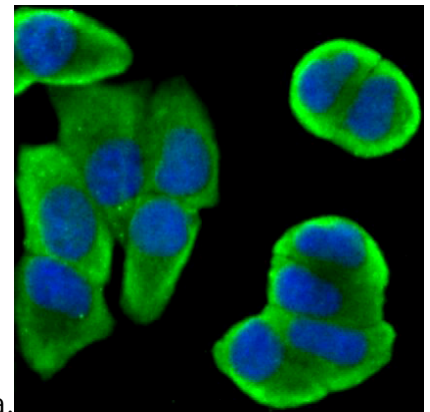
FC: 1/50

Validations



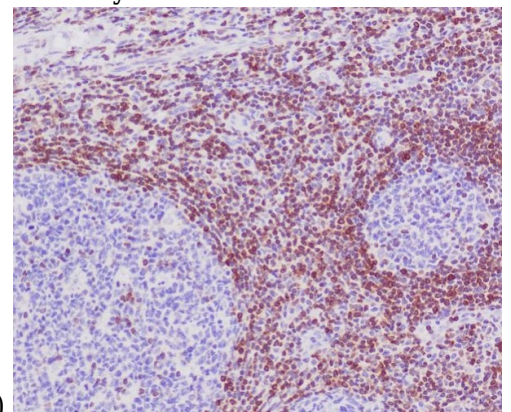
Western blot analysis of extracts from 293T, 3T3 and HeLa cells using Bcl-2 Rabbit pAb at 1:1000 dilution. Predicted band size: 26kDa. Observed

band size: 26kDa.



Immunocytochemistry staining of MCF-7 cells (green) fixed with paraformaldehyde, permeabilised with 0.25% Triton X100/PBS, and using Bcl-2 Antibody. The nuclear counter stain is

DAPI (blue).



Immunohistochemical analysis of paraffin-embedded human tonsil, using Bcl-2 Antibody.