

# Anti-SHANK2 antibody



Catalog Number: 176310

## Product name

Anti-SHANK2 antibody

## Specificity

Human

## Antibody description

Rabbit polyclonal antibody to SHANK2

## Preparation

This antigen of this antibody was the antiserum was produced against synthesized peptide derived from human shank2. aa range:331-380

## Formulation

Liquid, Liquid in PBS containing 50% glycerol, 0.5% BSA and 0.02% sodium azide.

## Storage

Store at +4°C after thawing. Aliquot store at -20°C or -80°C. Avoid repeated freeze / thaw cycles.

## Clonality

Polyclonal

## Ig Type

Rabbit IgG

## Applications

WB

## Dilutions

WB: 1:500-1:2000

## Validations

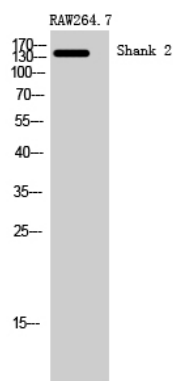


Fig1.; Western Blot analysis of RAW264.7 cells using Shank 2 Polyclonal Antibody