

SSRP1 antibody

Catalog Number: 115610

Product name

SSRP1 antibody

IP: 1:200-1:2000

IHC: 1:20-1:200

Specificity

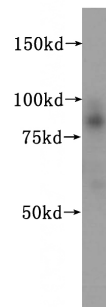
Human, Mouse, Rat; other species not tested.

IF: 1:50-1:500

Antibody description

SSRP1 Rabbit Polyclonal antibody. Positive IHC detected in human ovary tumor tissue. Positive IF detected in HeLa cells. Positive WB detected in HeLa cells, mouse testis tissue. Positive IP detected in mouse testis tissue. Observed molecular weight by Western-blot: 86 kDa

Validations



Preparation

This antibody was obtained by immunization of SSRP1 recombinant protein (Accession Number: XM_047427498). Purification method: Antigen affinity purified.

HeLa cells were subjected to SDS PAGE followed by western blot with Catalog No:115610(SSRP1 antibody) at dilution of 1:500

Formulation

PBS with 0.02% sodium azide and 50% glycerol pH 7.3.

Storage

Store at -20°C. DO NOT ALIQUOT

Clonality

Polyclonal

Ig Type

Rabbit IgG

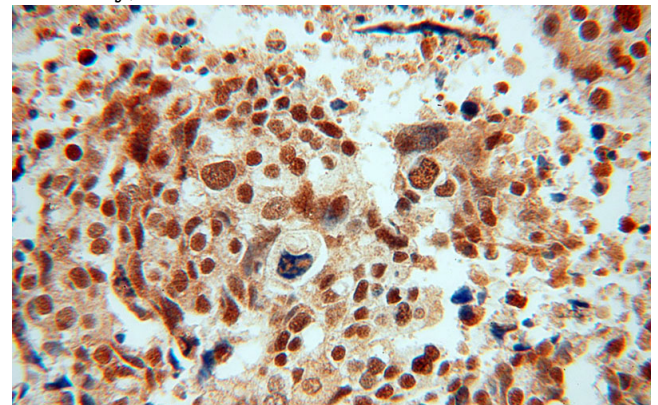
Applications

ELISA, WB, IHC, IP, IF

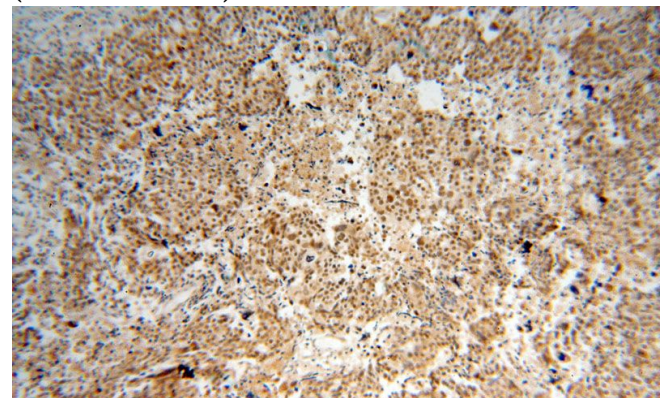
Dilutions

Recommended Dilution:

WB: 1:500-1:5000



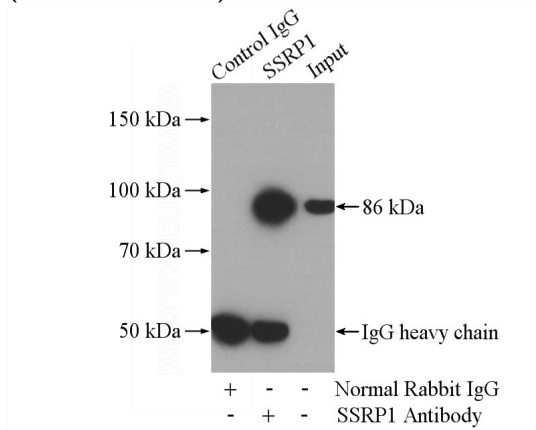
Immunohistochemical of paraffin-embedded human ovary tumor using Catalog No:115610(SSRP1 antibody) at dilution of 1:100 (under 40x lens)



SSRP1 antibody

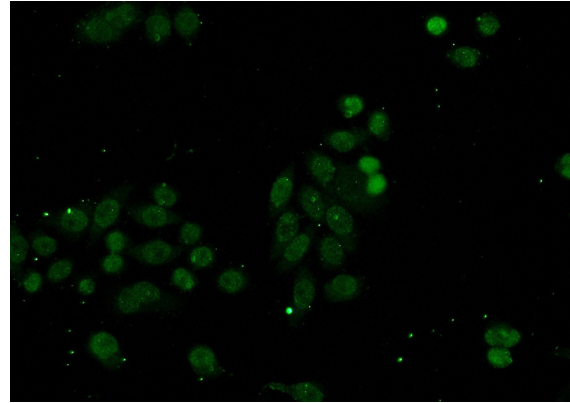
Catalog Number: 115610

Immunohistochemical of paraffin-embedded human ovary tumor using Catalog No:115610(SSRP1 antibody) at dilution of 1:100 (under 10x lens)



IP Result of anti-SSRP1 (IP:Catalog No:115610,

4ug; Detection:Catalog No:115610 1:500) with mouse testis tissue lysate 2400ug.



Immunofluorescent analysis of (-20oc Ethanol) fixed HeLa cells using Catalog No:115610(SSRP1 Antibody) at dilution of 1:50 and Alexa Fluor 488-conjugated AffiniPure Goat Anti-Rabbit IgG(H+L)