

# PFKP Polyclonal Antibody



Catalog Number: 165610

## Product name

PFKP Polyclonal Antibody

## Specificity

Human, Mouse, Rat

## Antibody description

Polyclonal antibody to PFKP

## Preparation

Antigen: Recombinant protein of human PFKP

## Formulation

PBS with 0.02% sodium azide, 50% glycerol, pH7.3.

## Storage

Store at -20°C. Avoid freeze / thaw cycles.

## Clonality

Polyclonal

## Ig Type

Rabbit IgG

## Applications

WB, IHC, IF

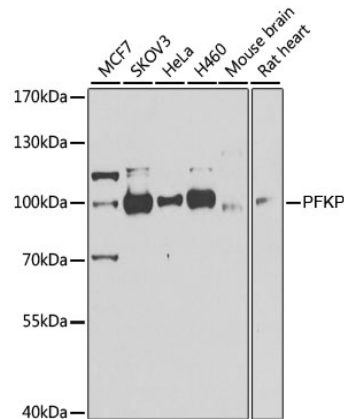
## Dilutions

WB 1:500 - 1:2000

IHC 1:100 - 1:200

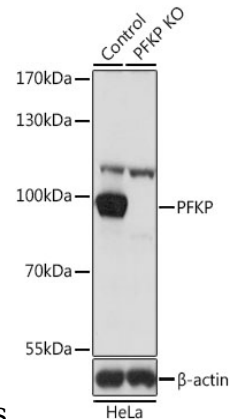
IF 1:50 - 1:200

## Validations



Western blot - PFKP Polyclonal Antibody

Western blot analysis of extracts of various cell lines, using PFKP antibody at 1:1000 dilution. Secondary antibody: HRP Goat Anti-Rabbit IgG (H+L) at 1:10000 dilution. Lysates/proteins: 25ug per lane. Blocking buffer: 3% nonfat dry milk in TBST. Detection: ECL



Enhanced Kit .Exposure time: 30s.

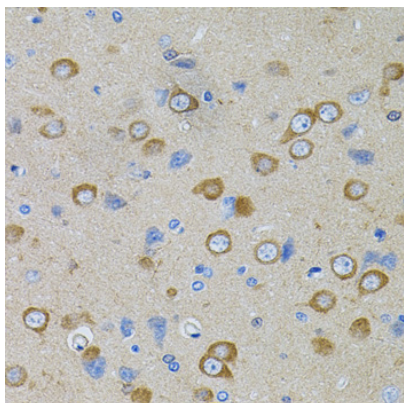
Western blot - PFKP Polyclonal Antibody

Western blot analysis of extracts from normal (control) and PFKP knockout HeLa cells, using PFKP antibody at 1:1000 dilution. Secondary antibody: HRP Goat Anti-Rabbit IgG (H+L) at 1:10000 dilution. Lysates/proteins: 25ug per lane. Blocking buffer: 3% nonfat dry milk in TBST. Detection: ECL Basic Kit .Exposure time: 1s.

# PFKP Polyclonal Antibody

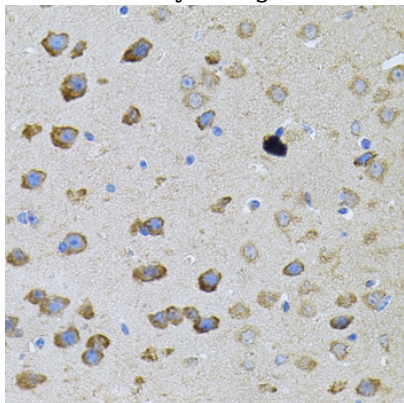
Catalog Number: 165610

---



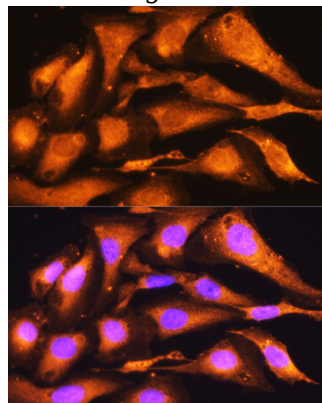
Immunohistochemistry - PFKP Polyclonal Antibody

Immunohistochemistry of paraffin-embedded mouse kidney using PFKP antibody (40x lens).



Immunohistochemistry - PFKP Polyclonal Antibody

Immunohistochemistry of paraffin-embedded rat brain using PFKP antibody (40x lens).



Immunohistochemistry - PFKP Polyclonal Antibody

Immunohistochemistry of paraffin-embedded rat kidney using PFKP antibody (40x lens).