

Human CD300A/CMRF35H/IGSF12/HSPC083 (His tag) recombinant protein



Catalog Number: 518210

General Information

Gene Name Synonym

CMRF35-Like Molecule 8, CLM-8, CD300 Antigen-Like Family Member A, CMRF-35-H9, CMRF35-H9, CMRF35-H, IRC1/IRC2, Immunoglobulin Superfamily Member 12, IgSF12, Inhibitory Receptor Protein 60, IRp60, NK Inhibitory Receptor, CD300a, CD300A, CMRF35H, IGSF12

Protein Construction

A DNA sequence encoding the Human CD300A/CMRF35H/IGSF12/HSPC083 Leu18-Gln178 is expressed with a 6His tag at the C-terminus.

Organism

Human

Expression Host

Human Cells

QC Testing

Purity

>95% as determined by SDS-PAGE.

Endotoxin

<1.0 EU per µg protein as determined by the LAL method.

Stability

Store for up to 12 months at -20°C to -80°C as lyophilized powder. Aliquots of reconstituted

samples are stable at < -20°C for 3 months.

Formulation

Lyophilized from a 0.2 µm filtered solution of 20mM PB, 150mM NaCl, pH 7.2.

Usage Guide

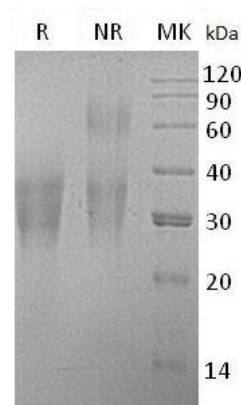
Storage

Lyophilized protein should be stored at <-20°C, though stable at room temperature for 3 weeks. Reconstituted protein solution can be stored at 4-7°C for 2-7 days.

Reconstitution

Always centrifuge tubes before opening. Do not mix by vortex or pipetting. It is not recommended to reconstitute to a concentration less than 100µg/ml. Dissolve the lyophilized protein in ddH₂O. Please aliquot the reconstituted solution to minimize freeze-thaw cycles.

SDS-PAGE



Human CD300A/CMRF35H/IGSF12/HSPC083 (His tag) recombinant protein