

ASB13 antibody

Catalog Number: 108210

Product name

ASB13 antibody

IHC: 1:20-1:200

IF: 1:10-1:100

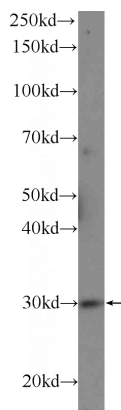
Specificity

Human, Mouse; other species not tested.

Validations

Antibody description

ASB13 Rabbit Polyclonal antibody. Positive WB detected in mouse heart tissue, mouse liver tissue. Positive IF detected in HepG2 cells. Positive IHC detected in human heart tissue, human colon tissue, human small intestine tissue. Observed molecular weight by Western-blot: 30 kDa



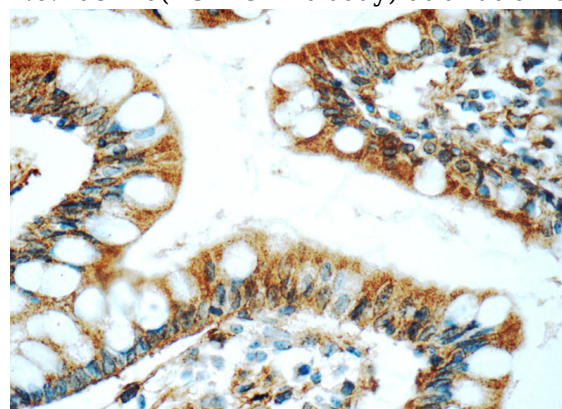
Preparation

This antibody was obtained by immunization of ASB13 recombinant protein (Accession Number: BC012056). Purification method: Antigen affinity purified.

mouse heart tissue were subjected to SDS PAGE followed by western blot with Catalog No:108210(ASB13 Antibody) at dilution of 1:600

Formulation

PBS with 0.1% sodium azide and 50% glycerol pH 7.3.



Storage

Store at -20°C. DO NOT ALIQUOT

Clonality

Polyclonal

Immunohistochemistry of paraffin-embedded human small intestine tissue slide using Catalog No:108210(ASB13 Antibody) at dilution of 1:50 (under 40x lens)

Ig Type

Rabbit IgG

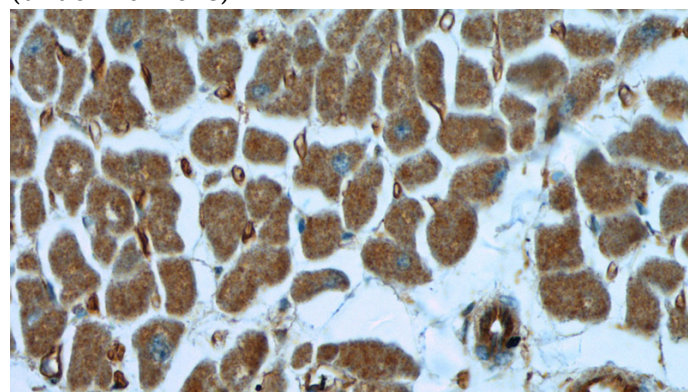
Applications

ELISA, WB, IHC, IF

Dilutions

Recommended Dilution:

WB: 1:200-1:2000

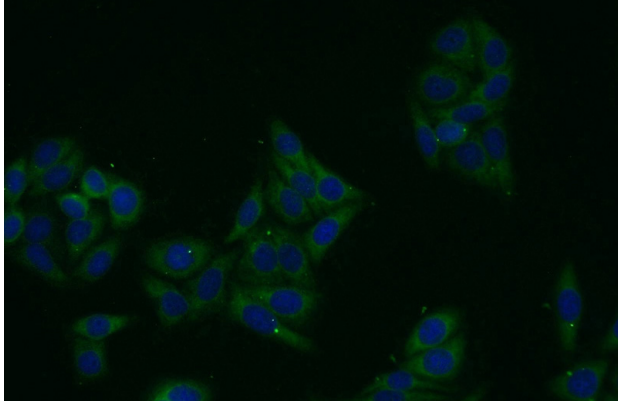


Immunohistochemistry of paraffin-embedded

ASB13 antibody

Catalog Number: 108210

human heart tissue slide using Catalog No:108210(ASB13 Antibody) at dilution of 1:50 (under 40x lens)



Immunofluorescent analysis of HepG2 cells using Catalog No:108210(ASB13 Antibody) at dilution of 1:25 and Alexa Fluor 488-conjugated AffiniPure Goat Anti-Rabbit IgG(H+L)