

Anti-Cd80 antibody

Catalog Number: 175210

Product name

Anti-Cd80 antibody

Specificity

Mouse

Antibody description

Rabbit polyclonal antibody to Cd80

Preparation

This antigen of this antibody was klh conjugated synthetic peptide derived from mouse b7-1/cd80 1-100/306

Formulation

Liquid, 0.01M TBS(pH7.4) with 1% BSA, 0.03% Proclin300 and 50% Glycerol.

Storage

Store at -20°C for one year. Avoid repeated freeze/thaw cycles. The lyophilized antibody is stable at room temperature for at least one month and for greater than a year when kept at -20°C. When reconstituted in sterile pH 7.4 0.01M PBS or diluent of antibody the antibody is stable for at least two weeks at 2-4°C.

Clonality

Polyclonal

Ig Type

Rabbit IgG

Applications

WB

Dilutions

WB:1:500-1000

Validations

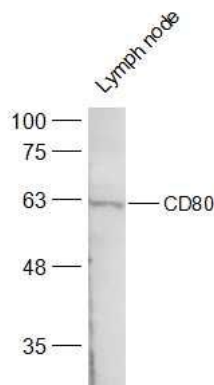
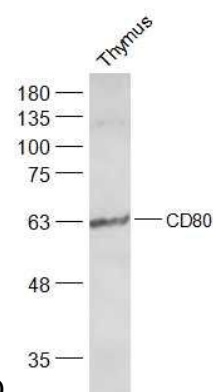
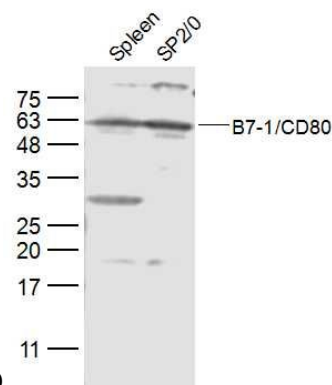


Fig1: Sample:; Lymph node (Mouse) Lysate at 40 ug; Primary: Anti-CD80 at 1/500 dilution; Secondary: IRDye800CW Goat Anti-Rabbit IgG at 1/20000 dilution; Predicted band size: 32 kD;



Observed band size: 60 kD

Fig2: Sample:; Thymus (Mouse) Lysate at 40 ug; Primary: Anti-CD80 at 1/500 dilution; Secondary: IRDye800CW Goat Anti-Rabbit IgG at 1/20000 dilution; Predicted band size: 32 kD; Observed



band size: 60 kD

Fig3: Sample:; Spleen (Mouse) Lysate at 40 ug; SP2/0 (Mouse) CellLysate at 30 ug; Primary: Anti-B7-1/CD80 at 1/300 dilution; Secondary: IRDye800CW Goat Anti-Rabbit IgG at 1/20000 dilution; Predicted band size: 32 kD; Observed

Anti-Cd80 antibody



Catalog Number: 175210

band size: 60 kD