

# NPC2 antibody



Catalog Number: 113210

## Product name

NPC2 antibody

## Specificity

human, mouse, rat; other species not tested.

## Antibody description

NPC2 Rabbit Polyclonal antibody. Positive WB detected in HT-1080 cells, mouse kidney tissue. Observed molecular weight by Western-blot: 21-23 kDa

## Preparation

This antibody was obtained by immunization of NPC2 recombinant protein (Accession Number: NM\_006432). Purification method: Antigen affinity purified.

## Formulation

PBS with 0.02% sodium azide and 50% glycerol pH 7.3.

## Storage

Store at -20°C. DO NOT ALIQUOT

## Clonality

Polyclonal

## Ig Type

Rabbit IgG

## Applications

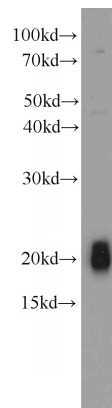
ELISA, WB

## Dilutions

Recommended Dilution:

WB: 1:200-1:2000

## Validations



HT-1080 cells were subjected to SDS PAGE followed by western blot with Catalog No:113210(NPC2 antibody) at dilution of 1:600