

# Anti-MS4A14 Rabbit antibody



Catalog Number: 168910

## Product name

Anti-MS4A14 Rabbit antibody

## Specificity

Human, Mouse, Rat

## Antibody description

MS4A14 Rabbit monoclonal antibody

## Preparation

Antigen: Recombinant protein of human MS4A14

## Formulation

50nM Tris-Glycine(pH 7.4), 0.15M NaCl,  
40%Glycerol, 0.01% sodium azide and 0.05% BSA.

## Storage

Store at 4°C short term. Store at -20°C long term.  
Avoid freeze / thaw cycle.

## Clonality

Monoclonal

## Ig Type

Rabbit IgG

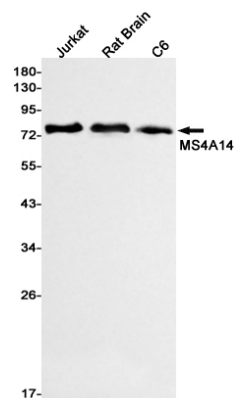
## Applications

WB

## Dilutions

WB: 1/2000-1/10000

## Validations



Western blot detection of MS4A14 in Jurkat,Rat Brain,C6 cell lysates using MS4A14 Rabbit mAb(1:1000 diluted).Predicted band size:77kDa.Observed band size:77kDa.