

Anti-MK2 Rabbit antibody



Catalog Number: 167910

Product name

Anti-MK2 Rabbit antibody

Specificity

Human, Mouse, Rat

Antibody description

MK2 Rabbit monoclonal antibody

Preparation

Antigen: A synthetic peptide of human MK2

Formulation

50nM Tris-Glycine(pH 7.4), 0.15M NaCl,
40%Glycerol, 0.01% sodium azide and 0.05% BSA

Storage

Store at 4°C short term. Store at -20°C long term.
Avoid freeze / thaw cycle.

Clonality

Monoclonal

Ig Type

Rabbit IgG

Applications

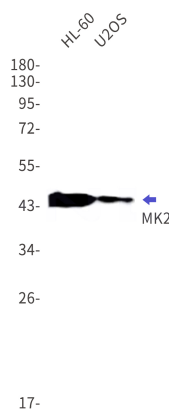
WB, IP

Dilutions

WB: 1/1000

IP: 1/50

Validations



Western blot detection of MK2 in HL-60,U2OS cell lysates using MK2 Rabbit mAb(1:1000 diluted).Predicted band size:46kDa.Observed band size:46kDa.