

# ZBTB20 antibody



Catalog Number: 116910

## Product name

ZBTB20 antibody

## Specificity

Human, Mouse; other species not tested.

## Antibody description

ZBTB20 Rabbit Polyclonal antibody. Positive IHC detected in human kidney tissue. Positive WB detected in L02 cells, HEK-293 cells, HepG2 cells, Jurkat cells, mouse brain tissue, mouse liver tissue, RAW 264.7 cells. Observed molecular weight by Western-blot: 73 kDa

## Preparation

This antibody was obtained by immunization of ZBTB20 recombinant protein (Accession Number: NM\_015642). Purification method: Antigen Affinity purified.

## Formulation

PBS with 0.02% sodium azide and 50% glycerol pH 7.3.

## Storage

Store at -20°C. DO NOT ALIQUOT

## Clonality

Polyclonal

## Ig Type

Rabbit IgG

## Applications

ELISA, WB, IHC

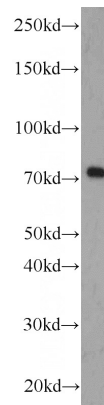
## Dilutions

Recommended Dilution:

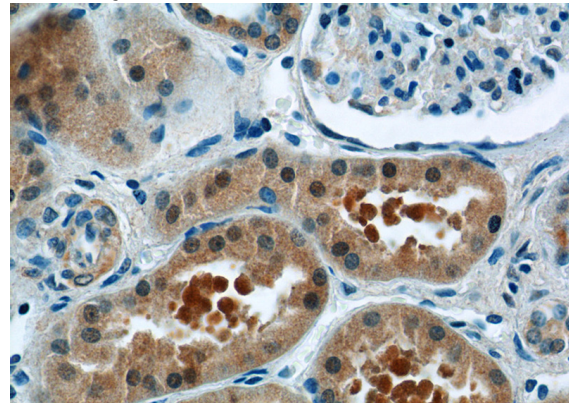
WB: 1:500-1:5000

IHC: 1:20-1:200

## Validations



L02 cells were subjected to SDS PAGE followed by western blot with Catalog No:116910(ZBTB20 antibody) at dilution of 1:1000



Immunohistochemistry of paraffin-embedded human kidney tissue slide using Catalog No:116910(ZBTB20 Antibody) at dilution of 1:50 (under 40x lens)