

# CPLX2 antibody

Catalog Number: 109510

## Product name

CPLX2 antibody

## Specificity

Human, Mouse, Rat; other species not tested.

## Antibody description

CPLX2 Rabbit Polyclonal antibody. Positive WB detected in mouse brain tissue. Positive IHC detected in human brain tissue. Observed molecular weight by Western-blot: 20kd

## Preparation

This antibody was obtained by immunization of Peptide (Accession Number: NM\_006650). Purification method: Antigen affinity purified.

## Formulation

PBS with 0.1% sodium azide and 50% glycerol pH 7.3.

## Storage

Store at -20°C. DO NOT ALIQUOT

## Clonality

Polyclonal

## Ig Type

Rabbit IgG

## Applications

ELISA, WB, IHC

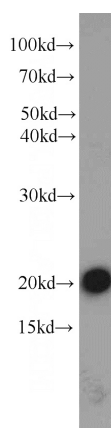
## Dilutions

Recommended Dilution:

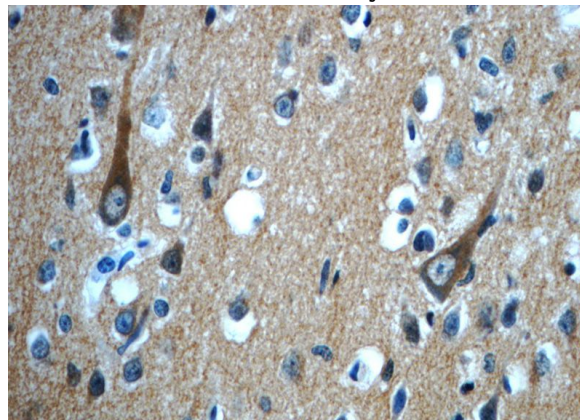
WB: 1:500-1:5000

IHC: 1:20-1:200

## Validations



mouse brain tissue were subjected to SDS PAGE followed by western blot with Catalog No:109510(CPLX2 antibody) at dilution of 1:1000



Immunohistochemistry of paraffin-embedded human brain slide using Catalog No:109510(CPLX2 Antibody) at dilution of 1:50