

# Anti-Sarcomeric Alpha Actinin Rabbit antibody



Catalog Number: 167510

## Product name

Rabbit IgG

Anti-Sarcomeric Alpha Actinin Rabbit antibody

## Applications

## Specificity

WB, IHC-P, IP

Human, Mouse, Rat

## Dilutions

## Antibody description

WB: 1/2000

Sarcomeric Alpha Actinin Rabbit polyclonal antibody

IHC: 1/50

## Preparation

IP: 1/20

Antigen: A synthetic peptide of human Sarcomeric Alpha Actinin

## Validations

## Formulation

Supplied in 50nM Tris-Glycine(pH 7.4), 0.15M NaCl, 40%Glycerol, 0.01% sodium azide and 0.05% BSA.

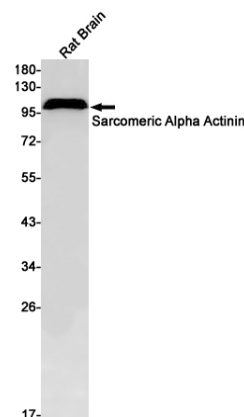
## Storage

Store at -20°C. Stable for 12 months from date of receipt.

## Clonality

Polyclonal

## Ig Type



Western blot detection of Sarcomeric Alpha Actinin in Rat Brain lysates using Sarcomeric Alpha Actinin Rabbit pAb(1:1000 diluted).Predicted band size:104kDa.Observed band size:104kDa.