

# OTC antibody



Catalog Number: 113510

## Product name

OTC antibody

## Immunogen

[Human OTC Recombinant protein \(His tag\)](#)

## Specificity

Human, Mouse, Rat; other species not tested.

## Antibody description

OTC Rabbit Polyclonal antibody. Positive WB detected in rat liver tissue, mouse liver tissue. Observed molecular weight by Western-blot: 36-40 kDa

## Preparation

This antibody was obtained by immunization of OTC recombinant protein (Accession Number: NM\_000531). Purification method: Antigen affinity purified.

## Formulation

PBS with 0.1% sodium azide and 50% glycerol pH 7.3.

## Storage

Store at -20°C. DO NOT ALIQUOT

## Clonality

Polyclonal

## Ig Type

Rabbit IgG

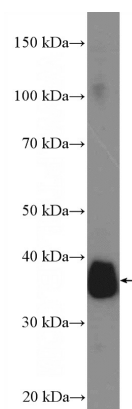
## Applications

ELISA, WB

## Dilutions

Recommended Dilution:  
WB: 1:500-1:5000

## Validations



rat liver tissue were subjected to SDS PAGE followed by western blot with Catalog No:113510(OTC Antibody) at dilution of 1:1000