

# Kdm6b Polyclonal Antibody



Catalog Number: 163510

## Product name

Kdm6b Polyclonal Antibody

## Specificity

Human, Mouse, Rat

## Antibody description

Polyclonal antibody to Kdm6b

## Preparation

Antigen: Recombinant fusion protein containing a sequence corresponding to amino acids 90-190 of mouse Kdm6b (NP\_001017426.1).

## Formulation

PBS with 0.02% sodium azide, 50% glycerol, pH7.3.

## Storage

Store at -20°C. Avoid freeze / thaw cycles.

## Clonality

Polyclonal

## Ig Type

Rabbit IgG

## Applications

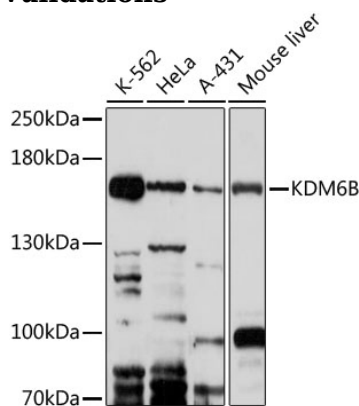
WB, IF

## Dilutions

WB 1:500 - 1:2000

IF 1:50 - 1:200

## Validations



Western blot - Kdm6b Polyclonal Antibody

Western blot analysis of extracts of various cell lines, using KDM6B antibody at 1:1000 dilution. Secondary antibody: HRP Goat Anti-Rabbit IgG (H+L) at 1:10000 dilution. Lysates/proteins: 25ug per lane. Blocking buffer: 3% nonfat dry milk in TBST. Detection: ECL Basic Kit. Exposure time: 1min.