

# CDC5L antibody

Catalog Number: 109110

## Product name

CDC5L antibody

IP: 1:200-1:2000

IF: 1:50-1:500

## Specificity

Human, Mouse, Rat; other species not tested.

## Antibody description

CDC5L Rabbit Polyclonal antibody. Positive IF detected in HepG2 cells. Positive WB detected in human brain tissue, HEK-293 cells, HepG2 cells, mouse brain tissue. Positive IP detected in HepG2 cells. Observed molecular weight by Western-blot: 100 kDa

## Preparation

This antibody was obtained by immunization of CDC5L recombinant protein (Accession Number: NM\_001253). Purification method: Antigen affinity purified.

## Formulation

PBS with 0.02% sodium azide and 50% glycerol pH 7.3.

## Storage

Store at -20°C. DO NOT ALIQUOT

## Clonality

Polyclonal

## Ig Type

Rabbit IgG

## Applications

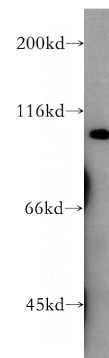
ELISA, WB, IP, IF

## Dilutions

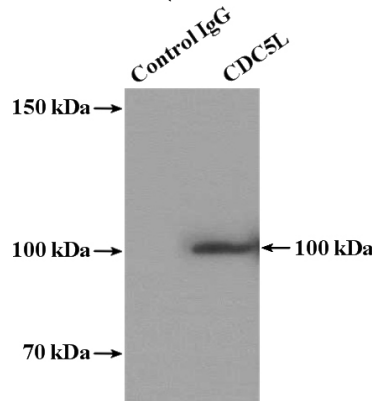
Recommended Dilution:

WB: 1:500-1:5000

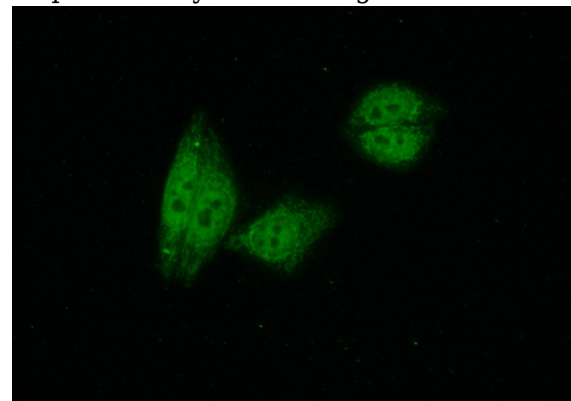
## Validations



human brain tissue were subjected to SDS PAGE followed by western blot with Catalog No:109110(CDC5L antibody) at dilution of 1:400



IP Result of anti-CDC5L (IP:Catalog No:109110, 4ug; Detection:Catalog No:109110 1:600) with HepG2 cells lysate 4000ug.



Immunofluorescent analysis of (10% Formaldehyde) fixed HepG2 cells using Catalog

# CDC5L antibody



Catalog Number: 109110

---

No:109110(CDC5L Antibody) at dilution of 1:50

and Alexa Fluor 488-conjugated AffiniPure Goat  
Anti-Rabbit IgG(H+L)