

# ALDH1A1 antibody



Catalog Number: 107110

## Product name

ALDH1A1 antibody

IHC: 1:50-1:500

IF: 1:10-1:100

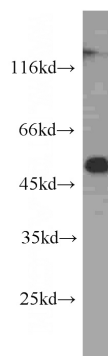
## Specificity

Human, Mouse, Rat; other species not tested.

## Validations

## Antibody description

ALDH1A1 Mouse Monoclonal antibody. Positive IF detected in A431 cells, HeLa cells. Positive IHC detected in human brain tissue. Positive WB detected in MCF7 cell, rat liver tissue. Observed molecular weight by Western-blot: 52 kDa



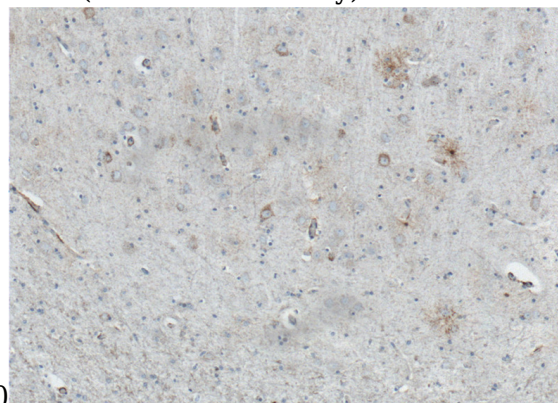
## Preparation

This antibody was obtained by immunization of ALDH1A1 recombinant protein (Accession Number: NM\_000689). Purification method: Protein G purified.

MCF7 cells were subjected to SDS PAGE followed by western blot with Catalog No:107570(ALDH1A1 antibody) at dilution of

## Formulation

PBS with 0.1% sodium azide and 50% glycerol pH 7.3.



## Storage

Store at -20°C. DO NOT ALIQUOT

## Clonality

Monoclonal

## Ig Type

Mouse IgG1

## Applications

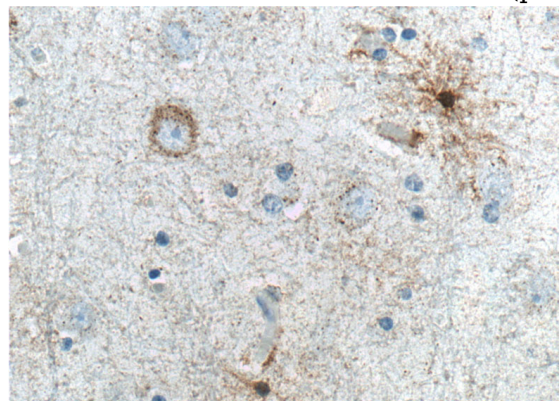
ELISA, WB, IF, IHC

## Dilutions

Recommended Dilution:

WB: 1:200-1:2000

Immunohistochemistry of paraffin-embedded human brain tissue slide using Catalog No:107570(ALDH1A1 Antibody) at dilution of 1:200 (under 10x lens). heat mediated antigen retrieved with Sodium Citrate buffer (pH6).

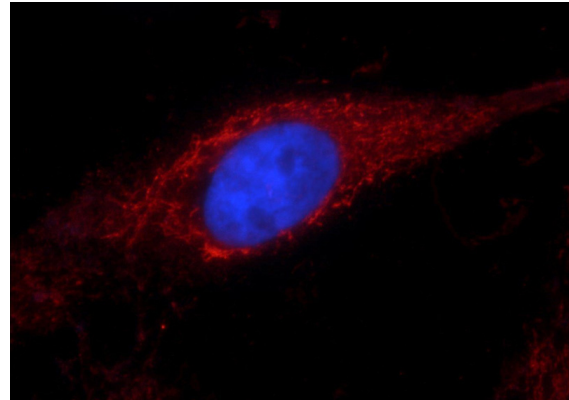


# ALDH1A1 antibody

Catalog Number: 107110

---

Immunohistochemistry of paraffin-embedded human brain tissue slide using Catalog No:107570(ALDH1A1 Antibody) at dilution of 1:200 (under 40x lens). heat mediated antigen retrieved with Sodium Citrate buffer (pH6).



Immunofluorescent analysis of A431 cells using Catalog No:107570(ALDH1A1 Antibody) at dilution of 1:25 and Rhodamine-Goat anti-Mouse IgG