

# RFC1 Polyclonal Antibody

Catalog Number: 163110

## Product name

RFC1 Polyclonal Antibody

## Specificity

Human

## Antibody description

Polyclonal antibody to RFC1

## Preparation

Antigen: Recombinant fusion protein containing a sequence corresponding to amino acids 400-700 of human RFC1 (NP\_001191676.1).

## Formulation

PBS with 0.02% sodium azide, 50% glycerol, pH7.3.

## Storage

Store at -20°C. Avoid freeze / thaw cycles.

## Clonality

Polyclonal

## Ig Type

Rabbit IgG

## Applications

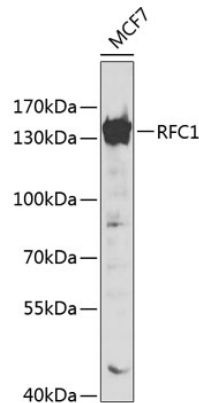
WB, IF

## Dilutions

WB 1:500 - 1:2000

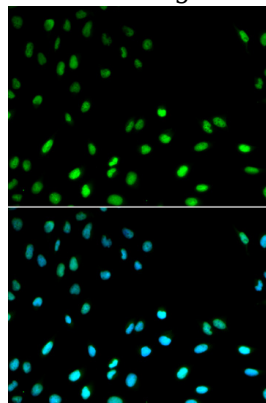
IF 1:50 - 1:200

## Validations



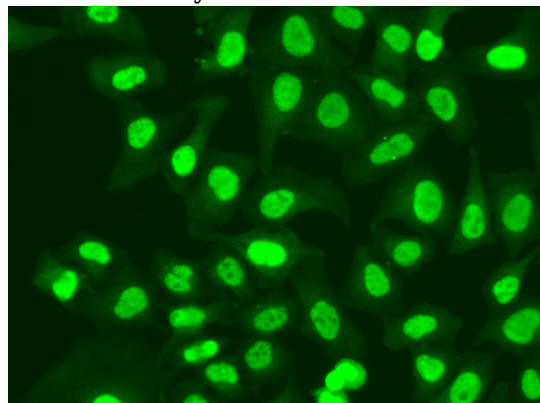
Western blot - RFC1 Polyclonal Antibody

Western blot analysis of extracts of MCF-7 cells, using RFC1 antibody at 1:500 dilution. Secondary antibody: HRP Goat Anti-Rabbit IgG (H+L) at 1:10000 dilution. Lysates/proteins: 25ug per lane. Blocking buffer: 3% nonfat dry milk in TBST.



Immunofluorescence - RFC1 Polyclonal Antibody

Immunofluorescence analysis of MCF-7 cells using RFC1 antibody. Blue: DAPI for nuclear staining.



Immunofluorescence - RFC1 Polyclonal Antibody

Immunofluorescence analysis of A549 cells using

# RFC1 Polyclonal Antibody



Catalog Number: 163110

---

RFC1 antibody .