

# Cytokeratin 7 antibody



Catalog Number: 109810

## Product name

Cytokeratin 7 antibody

## Specificity

Human, Mouse, Rat; other species not tested.

## Antibody description

Cytokeratin 7 Rabbit Polyclonal antibody. Positive FC detected in HeLa cells. Positive IHC detected in human ovary tumor tissue, human breast cancer tissue, human liver cancer tissue, human lung cancer tissue, human ovary tissue, human pancreas tissue, human stomach cancer tissue, mouse lung tissue, rat ovary tissue, rat stomach tissue. Positive IF detected in HepG2 cells, HeLa cells. Positive WB detected in HepG2 cells, A431 cells, HeLa cells, mouse liver tissue, rat liver tissue. Observed molecular weight by Western-blot: 54 kDa

## Preparation

This antibody was obtained by immunization of Cytokeratin 7 recombinant protein (Accession Number: NM\_005556). Purification method: Antigen affinity purified.

## Formulation

PBS with 0.02% sodium azide and 50% glycerol pH 7.3.

## Storage

Store at -20°C. DO NOT ALIQUOT

## Clonality

Polyclonal

## Ig Type

Rabbit IgG

## Applications

ELISA, WB, FC, IF, IHC

## Dilutions

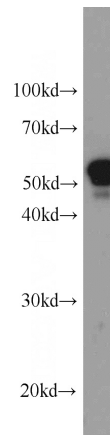
Recommended Dilution:

WB: 1:200-1:2000

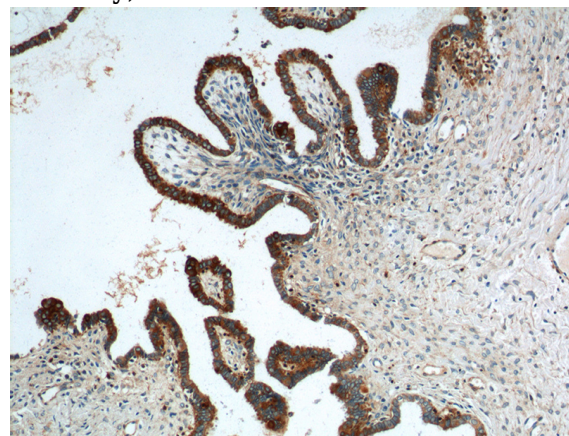
IHC: 1:20-1:200

IF: 1:20-1:200

## Validations



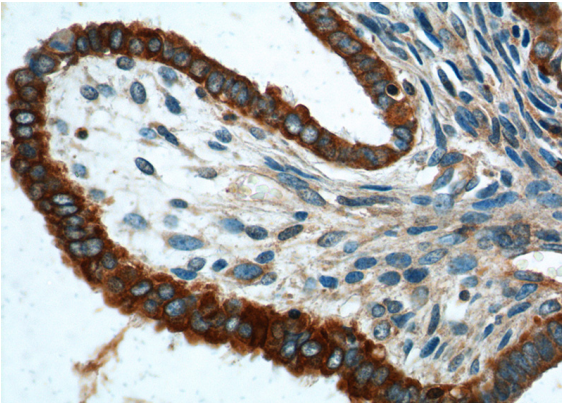
HepG2 cells were subjected to SDS PAGE followed by western blot with Catalog No:109810(KRT7 antibody) at dilution of 1:600



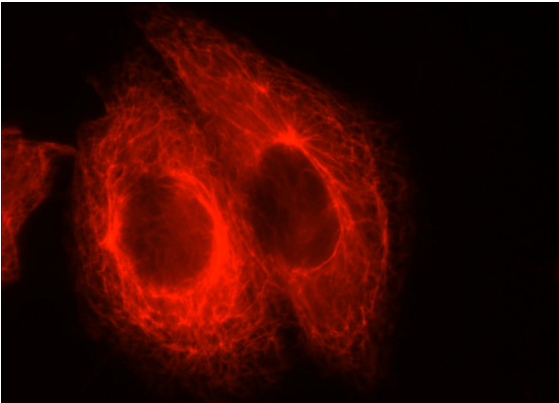
Immunohistochemistry of paraffin-embedded human ovary tumor tissue slide using Catalog No:109810(CK7 Antibody) at dilution of 1:200 (under 10x lens).

# Cytokeratin 7 antibody

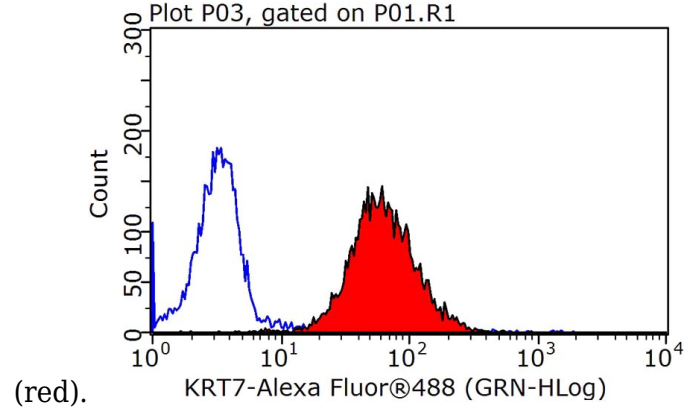
Catalog Number: 109810



Immunohistochemistry of paraffin-embedded human ovary tumor tissue slide using Catalog No:109810(CK7 Antibody) at dilution of 1:200 (under 40x lens).



Immunofluorescent analysis of HepG2 cells using Catalog No:109810(KRT7 Antibody) at dilution of 1:50 and Rhodamine-labeled goat anti-rabbit IgG Plot P03, gated on P01.R1



$1 \times 10^6$  HeLa cells were stained with 0.2ug CK7 antibody (Catalog No:109810, red) and control antibody (blue). Fixed with 90% MeOH blocked with 3% BSA (30 min). Alexa Fluor 488-conjugated AffiniPure Goat Anti-Rabbit IgG(H+L) with dilution 1:1500.