

# Anti-CCL18 / PARC / MIP-4 antibody



Catalog Number: 105810

## Product name

Anti-CCL18 / PARC / MIP-4 antibody

## Immunogen

[Human CCL18 / PARC / MIP-4 \(His Tag\) recombinant protein](#)

## Specificity

Human CCL18 / PARC / MIP-4

## Antibody description

Rabbit polyclonal to CCL18 / PARC / MIP-4

## Preparation

Produced in rabbits immunized with purified, recombinant Human CCL18 / PARC / MIP-4 (rh CCL18 / PARC / MIP-4; NP\_002979.1; Ala21-Ala89). CCL18 / PARC / MIP-4 specific IgG was purified by Human CCL18 / PARC / MIP-4 affinity chromatography.

## Formulation

0.2 µm filtered solution in PBS

## Storage

This antibody can be stored at 2°C-8°C for one month without detectable loss of activity. Antibody products are stable for twelve months from date of receipt when stored at -20°C to -80°C.

Preservative-Free.

Sodium azide is recommended to avoid contamination (final concentration 0.05%-0.1%). It is toxic to cells and should be disposed of properly. Avoid repeated freeze-thaw cycles.

## Clonality

Polyclonal

## Ig Type

Rabbit IgG

## Applications

ELISA, IHC-P

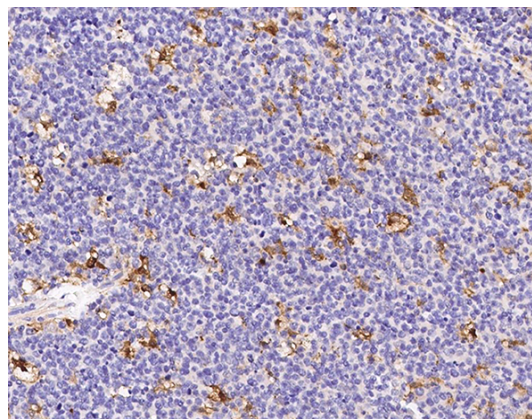
## Dilutions

ELISA: 0.1-0.2 µg/mL

This antibody can be used at 0.1-0.2 µg/mL with the appropriate secondary reagents to detect Human CCL18 / PARC / MIP-4. The detection limit for Human CCL18 / PARC / MIP-4 is < 0.039 ng/well.

IHC-P: 1-10 µg/mL

## Validations



CCL18 / PARC / MIP-4 Antibody, Rabbit PAb, Antigen Affinity Purified

Immunochemical staining of human CCL18 in human tonsil with rabbit polyclonal antibody (4 µg/mL, formalin-fixed paraffin embedded sections).