

# MRPL11 antibody



Catalog Number: 112810

## Product name

MRPL11 antibody

## Specificity

Human, Mouse, Rat; other species not tested.

## Antibody description

MRPL11 Rabbit Polyclonal antibody. Positive IF detected in HepG2 cells. Positive IHC detected in human liver tissue, human heart tissue, human kidney tissue, human lung tissue, human ovary tissue, human spleen tissue, human testis tissue. Positive FC detected in HepG2 cells. Positive IP detected in mouse liver tissue. Positive WB detected in HepG2 cells, K-562 cells, mouse liver tissue. Observed molecular weight by Western-blot: 21 kDa

## Preparation

This antibody was obtained by immunization of MRPL11 recombinant protein (Accession Number: NM\_016050). Purification method: Antigen affinity purified.

## Formulation

PBS with 0.02% sodium azide and 50% glycerol pH 7.3.

## Storage

Store at -20°C. DO NOT ALIQUOT

## Clonality

Polyclonal

## Ig Type

Rabbit IgG

## Applications

ELISA, WB, IHC, FC, IP, IF

## Dilutions

Recommended Dilution:

WB: 1:200-1:2000

IP: 1:500-1:5000

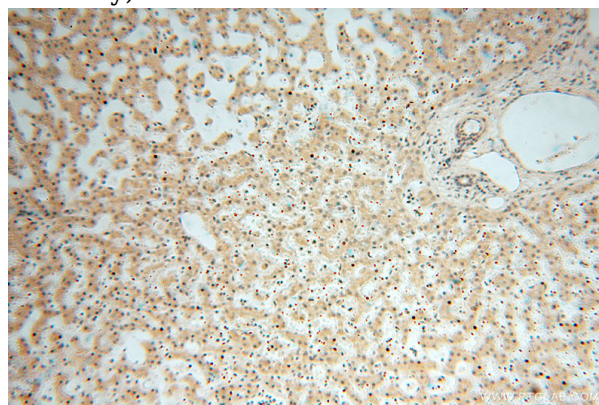
IHC: 1:20-1:200

IF: 1:50-1:500

## Validations



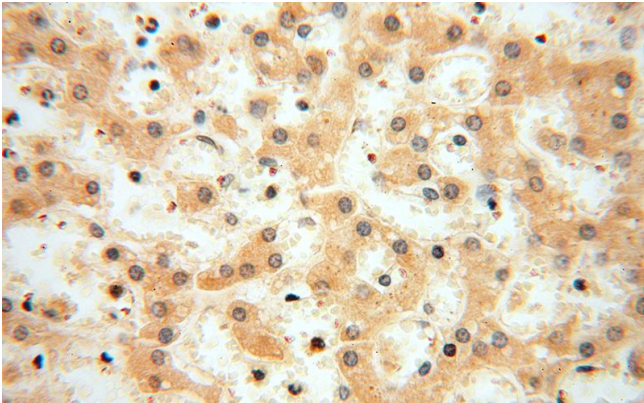
HepG2 cells were subjected to SDS PAGE followed by western blot with Catalog No:112810(MRPL11 antibody) at dilution of 1:1000



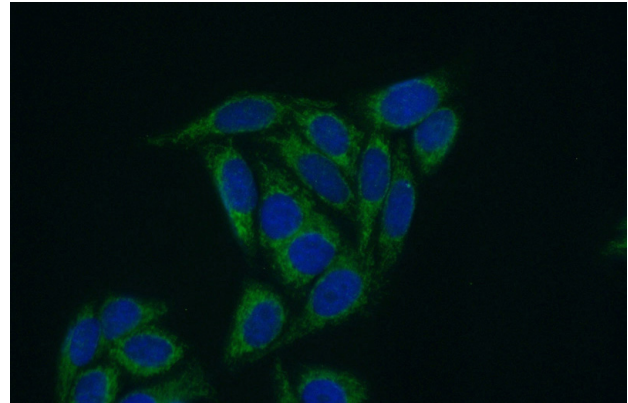
Immunohistochemical of paraffin-embedded human liver using Catalog No:112810(MRPL11 antibody) at dilution of 1:50 (under 10x lens)

# MRPL11 antibody

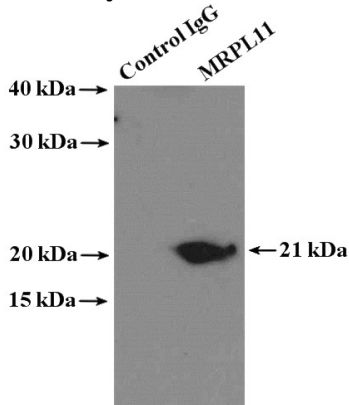
Catalog Number: 112810



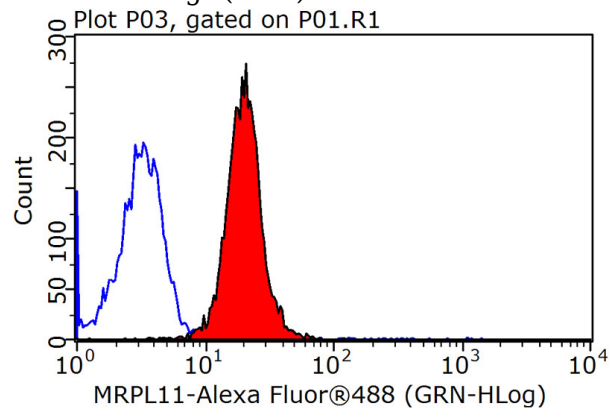
Immunohistochemical of paraffin-embedded human liver using Catalog No:112810(MRPL11 antibody) at dilution of 1:50 (under 40x lens)



Immunofluorescent analysis of (10% Formaldehyde) fixed HepG2 cells using Catalog No:112810(MRPL11 Antibody) at dilution of 1:50 and Alexa Fluor 488-conjugated AffiniPure Goat Anti-Rabbit IgG(H+L)



IP Result of anti-MRPL11 (IP:Catalog No:112810, 4ug; Detection:Catalog No:112810 1:1000) with mouse liver tissue lysate 4000ug.



1X10<sup>6</sup> HepG2 cells were stained with 0.2ug MRPL11 antibody (Catalog No:112810, red) and control antibody (blue). Fixed with 90% MeOH blocked with 3% BSA (30 min). Alexa Fluor 488-conjugated AffiniPure Goat Anti-Rabbit IgG(H+L) with dilution 1:1500.