

# INTS8 antibody

Catalog Number: 111810

## Product name

INTS8 antibody

## Specificity

Human; other species not tested.

## Antibody description

INTS8 Rabbit Polyclonal antibody. Positive IF detected in Hela cells. Positive WB detected in MCF7 cells, HeLa cells. Positive IP detected in HeLa cells. Observed molecular weight by Western-blot: 90-115 kDa

## Preparation

This antibody was obtained by immunization of Peptide (Accession Number: NM\_017864). Purification method: Antigen affinity purified.

## Formulation

PBS with 0.02% sodium azide and 50% glycerol pH 7.3.

## Storage

Store at -20°C. DO NOT ALIQUOT

## Clonality

Polyclonal

## Ig Type

Rabbit IgG

## Applications

ELISA, WB, IF, IP

## Dilutions

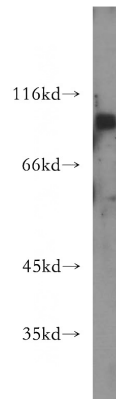
Recommended Dilution:

WB: 1:200-1:1000

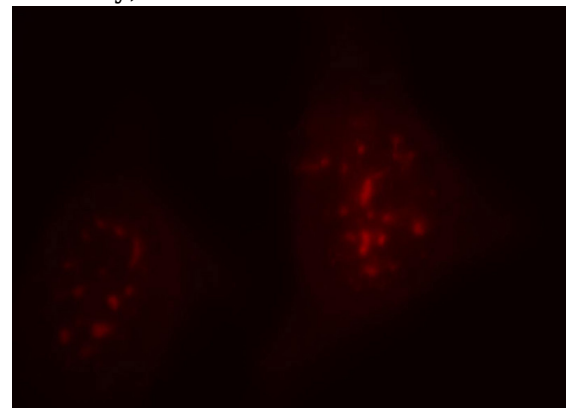
IP: 1:200-1:2000

IF: 1:10-1:100

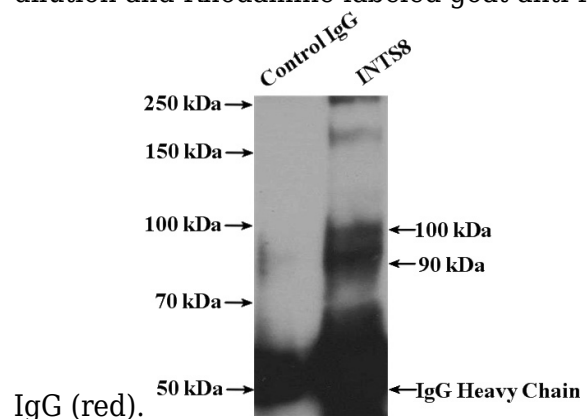
## Validations



MCF7 cells were subjected to SDS PAGE followed by western blot with Catalog No:111810(INTS8 antibody) at dilution of 1:300



Immunofluorescent analysis of HeLa cells, using INTS8 antibody Catalog No:111810 at 1:25 dilution and Rhodamine-labeled goat anti-rabbit



IP Result of anti-INTS8 (IP:Catalog No:111810, 4ug; Detection:Catalog No:111810 1:500) with HeLa cells lysate 4000ug.