

SLN antibody

Catalog Number: 115410

Product name

SLN antibody

IHC: 1:20-1:200

IF: 1:20-1:200

Specificity

Human, Mouse, Rat; other species not tested.

Antibody description

SLN Rabbit Polyclonal antibody. Positive WB detected in human heart tissue, mouse heart tissue. Positive IHC detected in human heart tissue. Positive IF detected in PC-3 cells. Observed molecular weight by Western-blot: 4 kDa

Preparation

This antibody was obtained by immunization of SLN recombinant protein (Accession Number: NM_003063). Purification method: Antigen affinity purified.

Formulation

PBS with 0.02% sodium azide and 50% glycerol pH 7.3.

Storage

Store at -20°C. DO NOT ALIQUOT

Clonality

Polyclonal

Ig Type

Rabbit IgG

Applications

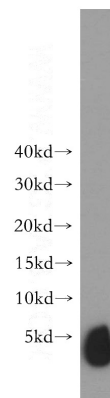
ELISA, WB, IHC, IF

Dilutions

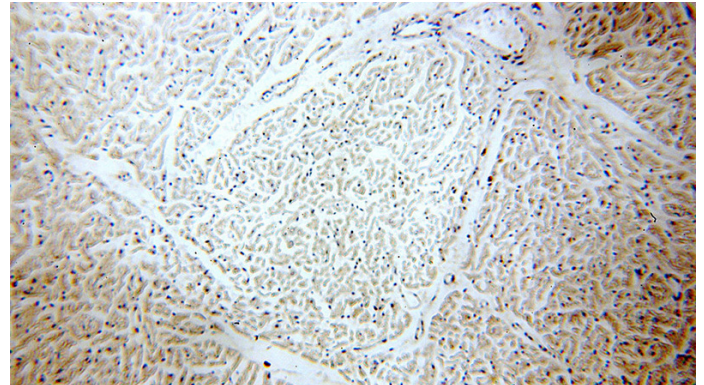
Recommended Dilution:

WB: 1:200-1:2000

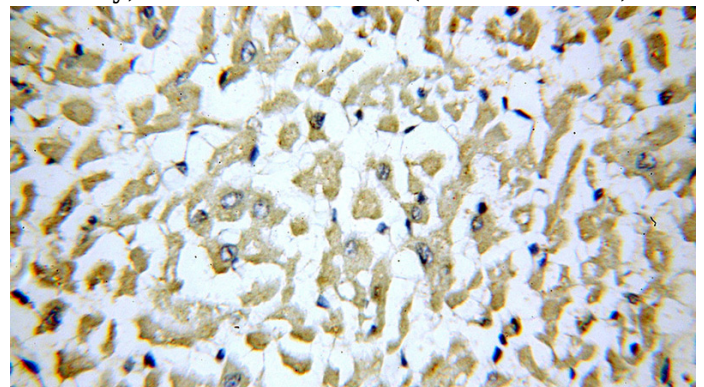
Validations



human heart tissue were subjected to SDS PAGE followed by western blot with Catalog No:115410(SLN antibody) at dilution of 1:300



Immunohistochemical of paraffin-embedded human heart using Catalog No:115410(SLN antibody) at dilution of 1:100 (under 10x lens)

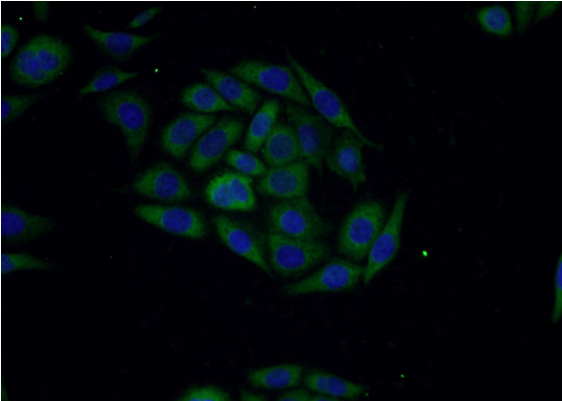


Immunohistochemical of paraffin-embedded human heart using Catalog No:115410(SLN

SLN antibody

Catalog Number: 115410

antibody) at dilution of 1:100 (under 40x lens)



Immunofluorescent analysis of PC-3 cells using Catalog No:115410(SLN Antibody) at dilution of 1:50 and Alexa Fluor 488-conjugated AffiniPure Goat Anti-Rabbit IgG(H+L)