

SMAD9 Polyclonal Antibody



Catalog Number: 165410

Product name

SMAD9 Polyclonal Antibody

Specificity

Human, Mouse, Rat

Antibody description

Polyclonal antibody to SMAD9

Preparation

Antigen: Recombinant fusion protein containing a sequence corresponding to amino acids 1-300 of human SMAD9 (NP_005896.1).

Formulation

PBS with 0.02% sodium azide, 50% glycerol, pH7.3.

Storage

Store at -20°C. Avoid freeze / thaw cycles.

Clonality

Polyclonal

Ig Type

Rabbit IgG

Applications

WB, IHC, IF

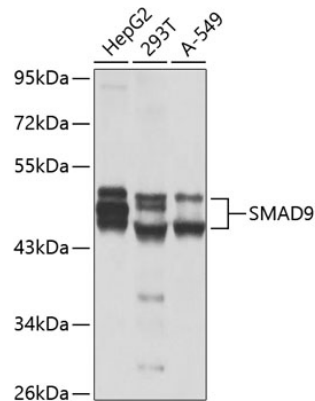
Dilutions

WB 1:500 - 1:2000

IHC 1:50 - 1:200

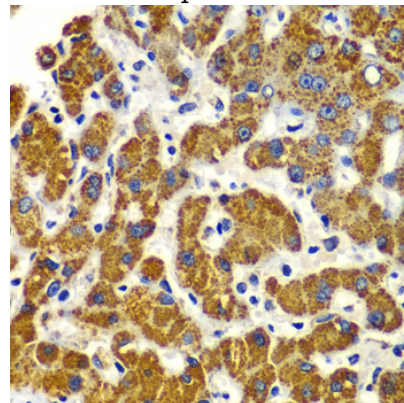
IF 1:50 - 1:200

Validations



Western blot - SMAD9 Polyclonal Antibody

Western blot analysis of extracts of various cell lines, using SMAD9 antibody at 1:1000 dilution. Secondary antibody: HRP Goat Anti-Rabbit IgG (H+L) at 1:10000 dilution. Lysates/proteins: 25ug per lane. Blocking buffer: 3% nonfat dry milk in TBST. Detection: ECL Basic Kit. Exposure time: 30s.

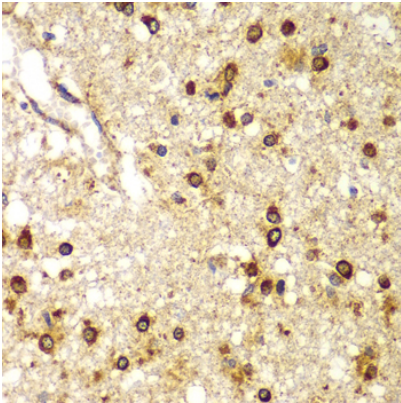


Immunohistochemistry - SMAD9 Polyclonal Antibody

Immunohistochemistry of paraffin-embedded human liver injury using SMAD9 antibody at dilution of 1:100 (40x lens).

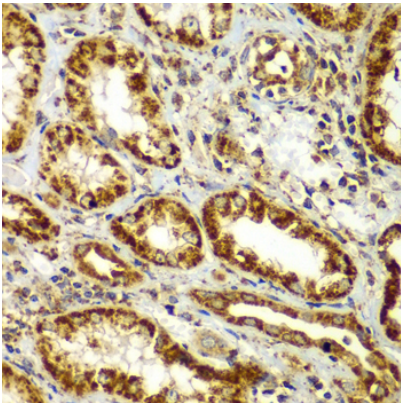
SMAD9 Polyclonal Antibody

Catalog Number: 165410



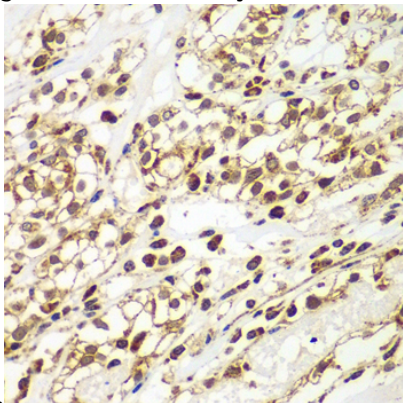
Immunohistochemistry - SMAD9 Polyclonal Antibody

Immunohistochemistry of paraffin-embedded human brain cancer using SMAD9 antibody at dilution of 1:100 (40x lens).



Immunohistochemistry - SMAD9 Polyclonal Antibody

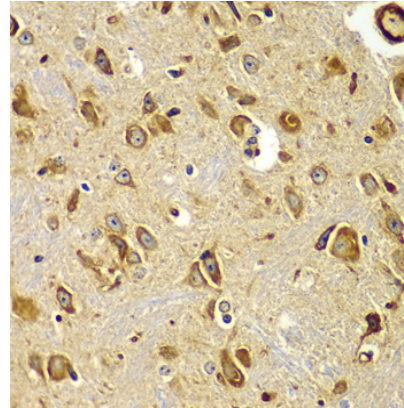
Immunohistochemistry of paraffin-embedded human kidney using SMAD9 antibody at dilution



of 1:100 (40x lens).

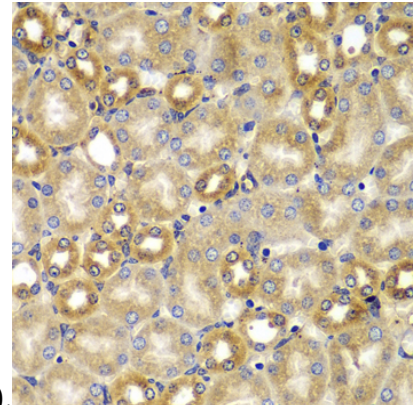
Immunohistochemistry - SMAD9 Polyclonal Antibody

Immunohistochemistry of paraffin-embedded human kidney cancer using SMAD9 antibody at dilution of 1:100 (40x lens).



Immunohistochemistry - SMAD9 Polyclonal Antibody

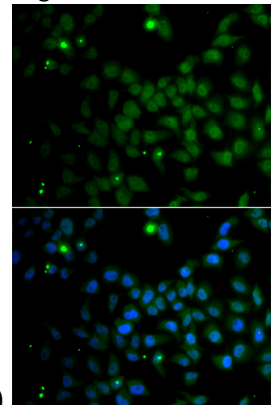
Immunohistochemistry of paraffin-embedded mouse brain using SMAD9 antibody at dilution of



1:100 (40x lens).

Immunohistochemistry - SMAD9 Polyclonal Antibody

Immunohistochemistry of paraffin-embedded mouse kidney using SMAD9 antibody at dilution of



1:100 (40x lens).

SMAD9 Polyclonal Antibody



Catalog Number: 165410

Immunofluorescence - SMAD9 Polyclonal Antibody

Immunofluorescence analysis of A549 cells using SMAD9 antibody . Blue: DAPI for nuclear staining.