

Canine PD-L1/B7-H1/CD274 (Fc Tag) recombinant protein



Catalog Number: 504410

General Information

Protein Construction

A DNA sequence encoding the canine CD274 (XP_541302.4) (Met1-Arg236) was expressed with the Fc region of human IgG1 at the C-terminus.

Organism

Canine

Expression Host

Human Cells

QC Testing

Activity

1. Measured by its binding ability in a functional ELISA.

2. Immobilized human PD1-His at 10 μ g/mL (100 μ L/well) can bind canine CD274-Fc, the EC50 of canine PD-L1-Fc is 0.1-0.5 μ g/mL.

Purity

> (17.0+77.6) % as determined by SDS-PAGE.

Endotoxin

<1.0 EU per μ g protein as determined by the LAL method.

Stability

Samples are stable for up to twelve months from date of receipt at -70 $^{\circ}$ C

Predicted N terminal

Phe 19

Molecular Mass

The recombinant canine CD274 consists 456 amino acids and predicts a molecular mass of 51.5 kDa.

Formulation

Lyophilized from sterile PBS, pH 7.4.

1. 5 % trehalose and mannitol are added as protectants before lyophilization.

2. Please contact us for any concerns or special requirements.

Usage Guide

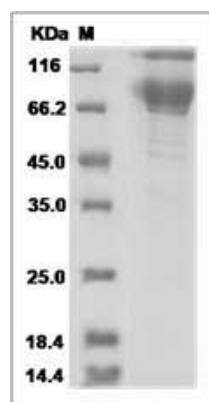
Storage

Store it under sterile conditions at -20 $^{\circ}$ C to -80 $^{\circ}$ C. It is recommended that the protein be aliquoted for optimal storage. Avoid repeated freeze-thaw cycles.

Reconstitution

Adding sterile water, prepare a stock solution of 0.25 mg/ml. Concentration is measured by UV-Vis.

SDS-PAGE



Canine PD-L1 / B7-H1 / CD274 Protein (Fc Tag)
SDS-PAGE