

Anti-IL-6 antibody



Catalog Number: 104410

Product name

Anti-IL-6 antibody

Immunogen

[Mouse IL-6 recombinant protein](#)

Specificity

Mouse IL6 / IL-6

Antibody description

Rabbit polyclonal to IL-6

Preparation

Produced in rabbits immunized with purified, recombinant Mouse IL6 / IL-6 (rh IL6 / IL-6; P08505; Phe25-Thr211). IL6 / IL-6 specific IgG was purified by Mouse IL6 / IL-6 affinity chromatography.

Formulation

0.2 µm filtered solution in PBS

Storage

This antibody can be stored at 2°C-8°C for one month without detectable loss of activity. Antibody products are stable for twelve months from date of receipt when stored at -20°C to -80°C.

Preservative-Free.

Sodium azide is recommended to avoid contamination (final concentration 0.05%-0.1%). It is toxic to cells and should be disposed of properly. Avoid repeated freeze-thaw cycles.

Clonality

Polyclonal

Ig Type

Rabbit IgG

Applications

ELISA, WB

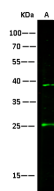
Dilutions

WB: 10-50 µg/mL

ELISA: 0.1-0.2 µg/mL

This antibody can be used at 0.1-0.2 µg/mL with the appropriate secondary reagents to detect Mouse IL6 / IL-6. The detection limit for Mouse IL6 / IL-6 is < 0.039 ng/well.

Validations



Items	Lanes
Sample (whole cell lysate)	A HepG2
Sample Volume (µg/lane)	30
Gel	13%SDS-PAGE reducing gel
Recommended Concentration	10-50 µg/ml
Secondary Antibody	Dylight 800-labeled Antibody to Rabbit IgG (H+L), at 1:5000 dilution.
Explanation	Developed using Odyssey imaging system. Predicted band size : 24 kDa Observed band size : 25 kDa Additional bands at : 38 kDa (We are unsure as to the identity of these extra bands. They are possible non-specific bindings).

IL6 / IL-6 Antibody, Rabbit PAb, Antigen Affinity Purified, Western blot