

PLS3 antibody

Catalog Number: 114010

Product name

PLS3 antibody

Specificity

human, mouse, rat; other species not tested.

Antibody description

PLS3 Rabbit Polyclonal antibody. Positive WB detected in HepG2 cells, COLO 320 cells, HeLa cells. Positive IHC detected in human oesophagus. Observed molecular weight by Western-blot: 63kd,38kd

Preparation

This antibody was obtained by immunization of Peptide (Accession Number: NM_005032). Purification method: Antigen affinity purified.

Formulation

PBS with 0.02% sodium azide and 50% glycerol pH 7.3.

Storage

Store at -20°C. DO NOT ALIQUOT

Clonality

Polyclonal

Ig Type

Rabbit IgG

Applications

ELISA, WB, IHC

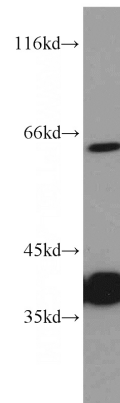
Dilutions

Recommended Dilution:

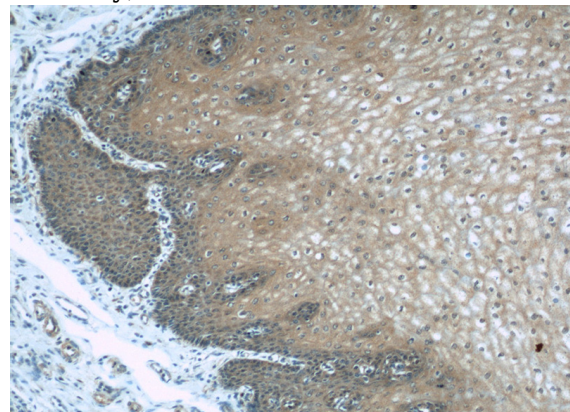
WB: 1:200-1:2000

IHC: 1:20-1:200

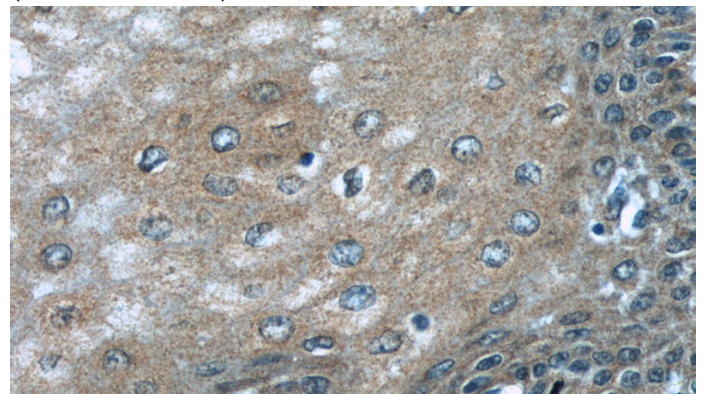
Validations



HepG2 cells were subjected to SDS PAGE followed by western blot with Catalog No:114010(PLS3 antibody) at dilution of 1:500



Immunohistochemical of paraffin-embedded human oesophagus using Catalog No:114010(PLS3 antibody) at dilution of 1:50 (under 10x lens)



Immunohistochemical of paraffin-embedded human oesophagus using Catalog No:114010(PLS3 antibody) at dilution of 1:50 (under 40x lens)