

KIF2A antibody

Catalog Number: 112010

Product name

KIF2A antibody

IP: 1:500-1:5000

IHC: 1:20-1:200

Specificity

Human, Mouse, Rat; other species not tested.

Antibody description

KIF2A Rabbit Polyclonal antibody. Positive WB detected in HeLa cells, human brain tissue, mouse brain tissue. Positive IP detected in mouse brain tissue. Positive IHC detected in human breast cancer tissue, human lymphoma tissue. Observed molecular weight by Western-blot: 80-100 kDa

Preparation

This antibody was obtained by immunization of KIF2A recombinant protein (Accession Number: NM_001243952). Purification method: Antigen affinity purified.

Formulation

PBS with 0.1% sodium azide and 50% glycerol pH 7.3.

Storage

Store at -20°C. DO NOT ALIQUOT

Clonality

Polyclonal

Ig Type

Rabbit IgG

Applications

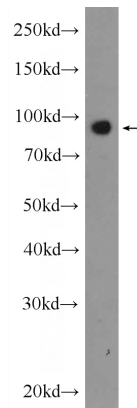
ELISA, WB, IP, IHC

Dilutions

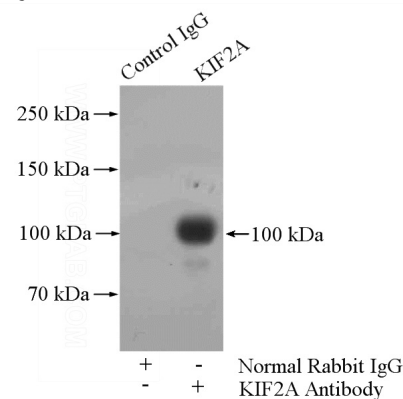
Recommended Dilution:

WB: 1:500-1:5000

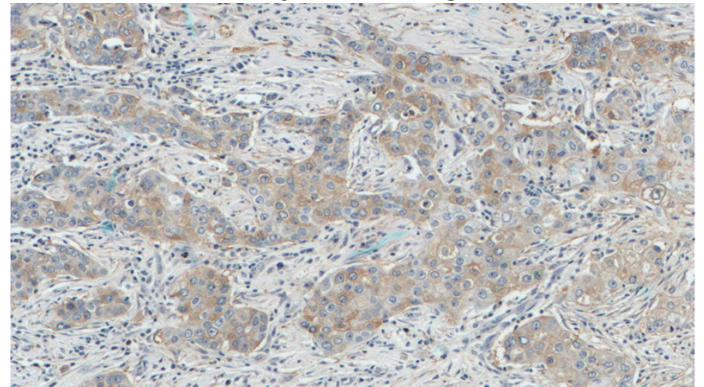
Validations



HeLa cells were subjected to SDS PAGE followed by western blot with Catalog No:112010(KIF2A Antibody) at dilution of 1:1200



IP Result of anti-KIF2A (IP:Catalog No:112010, 4ug; Detection:Catalog No:112010 1:1000) with mouse brain tissue lysate 4000ug.

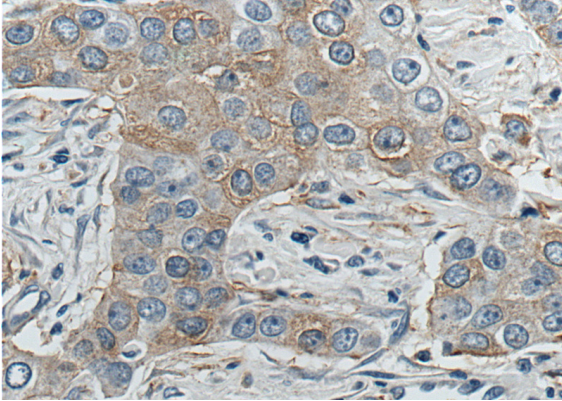


Immunohistochemistry of paraffin-embedded human breast cancer tissue slide using Catalog

KIF2A antibody

Catalog Number: 112010

No:112010(KIF2A Antibody) at dilution of 1:200
(under 10x lens).



Immunohistochemistry of paraffin-embedded
human breast cancer tissue slide using Catalog
No:112010(KIF2A Antibody) at dilution of 1:200
(under 40x lens).