

Human GGPS1 / GGPPS1 (His Tag) recombinant protein



Catalog Number: 502010

General Information

Protein Construction

A DNA sequence encoding the human GGPS1 (NP_001032354.1) (Met1-Glu300) was expressed with a polyhistidine tag at the C-terminus.

Organism

Human

Expression Host

Human Cells

QC Testing

Purity

> 95 % as determined by SDS-PAGE

Endotoxin

< 1.0 EU per μg protein as determined by the LAL method.

Stability

Samples are stable for up to twelve months from date of receipt at -70°C

Predicted N terminal

Met

Molecular Mass

The recombinant human GGPS1 consists 311

amino acids and predicts a molecular mass of 36.3 kDa.

Formulation

Lyophilized from sterile NI-A, 20 % glycerol.
1. 5 % trehalose and mannitol are added as protectants before lyophilization.

2. Please contact us for any concerns or special requirements.

Usage Guide

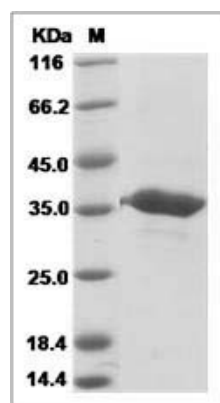
Storage

Store it under sterile conditions at -20°C to -80°C . It is recommended that the protein be aliquoted for optimal storage. Avoid repeated freeze-thaw cycles.

Reconstitution

Adding sterile water, prepare a stock solution of 0.25 mg/ml. Concentration is measured by UV-Vis.

SDS-PAGE



Human GGPS1 / GGPPS1 Protein (His Tag)