

Anti-Phospho-Presenilin 1/PS-1 (Ser310) Rabbit antibody



Catalog Number: 168700

Product name

Monoclonal

Anti-Phospho-Presenilin 1/PS-1 (Ser310) Rabbit antibody

Ig Type

Rabbit IgG

Specificity

Human

Applications

WB, ICC/IF

Antibody description

Phospho-Presenilin 1/PS-1 (Ser310) Rabbit monoclonal antibody

Dilutions

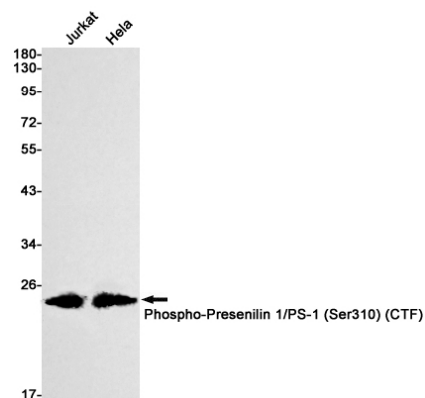
1:2000

1:50

Preparation

Antigen: A synthetic phosphopeptide corresponding to residues surrounding Ser310 of human Presenilin 1

Validations



Formulation

Supplied in 50nM Tris-Glycine(pH 7.4), 0.15M NaCl, 40%Glycerol, 0.01% sodium azide and 0.05% BSA.

Western blot detection of Phospho-Presenilin 1/PS-1 (Ser310) in Jurkat, HeLa cell lysates using Phospho-Presenilin 1/PS-1 (Ser310) Rabbit mAb(1:1000 diluted). Predicted band size: 53kDa. Observed band size: 22kDa.

Storage

Store at 4°C short term. Aliquot and store at -20°C long term. Avoid freeze / thaw cycle.

Clonality