

Anti-FLT-3/CD135/FLK-2 antibody



Catalog Number: 102700

Product name

Anti-FLT-3/CD135/FLK-2 antibody

Immunogen

[Human TIM-3/HAVCR2 \(His Tag\) recombinant protein](#)

Specificity

Human FLT3 / FLK2 / CD135

Antibody description

Rabbit polyclonal to FLT-3/CD135/FLK-2

Preparation

Produced in rabbits immunized with purified, recombinant Human FLT3 (rh FLT3; NP_116171.3; Met 1-Arg 200). FLT3 specific IgG was purified by human FLT3 affinity chromatography

Formulation

0.2 µm filtered solution in PBS with 5% trehalose

Storage

This antibody can be stored at 2°C-8°C for one month without detectable loss of activity. Antibody products are stable for twelve months from date of receipt when stored at -20°C to -80°C.

Preservative-Free.

Sodium azide is recommended to avoid contamination (final concentration 0.05%-0.1%). It is toxic to cells and should be disposed of properly. Avoid repeated freeze-thaw cycles.

Clonality

Polyclonal

Ig Type

Rabbit IgG

Applications

ELISA, WB, IP

Dilutions

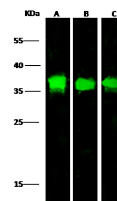
WB: 5-10 µg/mL

ELISA: 0.1-0.2 µg/mL

This antibody can be used at 0.1-0.2 µg/mL with the appropriate secondary reagents to detect Human FLT3. The detection limit for Human FLT3 is approximately 0.00975 ng/well.

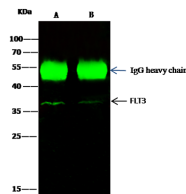
IP: 1-4 µg/mg of lysate

Validations



Lanes	A	B	C
Items			
Sample (Membrane lysate)	Jurkat	HepG2	K562
Sample Volume (µg/lane)	20	20	20
Gel	13% SDS-PAGE reducing gel		
Recommended Concentration	5-10µg/ml		
Secondary Antibody	DyLight 800 Labeled Antibody to Rabbit IgG (H+L), at 1:5000 dilution.		
Developed using	Odyssey imaging system		
Explanation	Predicted band size : 112 kDa Observed band size : 37 kDa		

FLT-3 / CD135 / FLK-2 Antibody, Rabbit PAb, Antigen Affinity Purified, Western blot



Lanes	A	B
Items		
Sample (whole cell lysate)	HepG2	K562
Sample quantity	0.5 mg	
IP antibody quantity	2 µg	
Protein G agarose	1.5 µl of 50% Protein G Agarose	
Gel	13% SDS-PAGE reducing gel	
Primary antibody	FLT3 antibody at 2 µg/ml [Cat# 10445-RP02]	
Secondary antibody	DyLight 800-labeled antibody to rabbit IgG (H+L), at 1:5000 dilution.	

FLT-3 / CD135 / FLK-2 Antibody, Rabbit PAb, Antigen Affinity Purified