

# HSPB2 antibody

Catalog Number: 111700

## Product name

HSPB2 antibody

IHC: 1:20-1:200

IF: 1:10-1:100

## Specificity

Human, Mouse, Rat; other species not tested.

## Antibody description

HSPB2 Rabbit Polyclonal antibody. Positive WB detected in human skeletal muscle tissue, rat heart tissue. Positive IF detected in HepG2 cells. Positive IHC detected in human heart tissue, human skeletal muscle tissue. Observed molecular weight by Western-blot: 20-25kd

## Preparation

This antibody was obtained by immunization of HSPB2 recombinant protein (Accession Number: NM\_001541). Purification method: Antigen affinity purified.

## Formulation

PBS with 0.02% sodium azide and 50% glycerol pH 7.3.

## Storage

Store at -20°C. DO NOT ALIQUOT

## Clonality

Polyclonal

## Ig Type

Rabbit IgG

## Applications

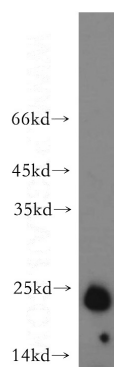
ELISA, WB, IHC, IF

## Dilutions

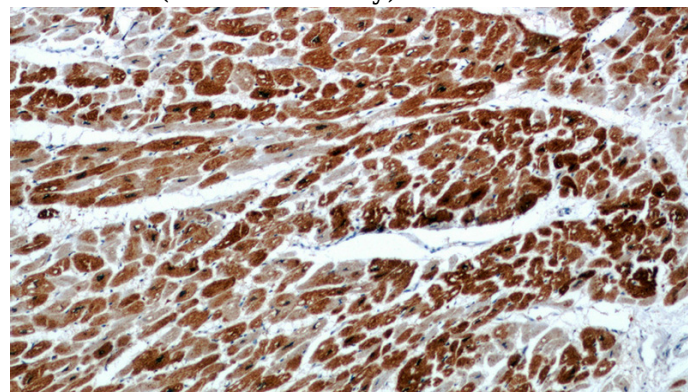
Recommended Dilution:

WB: 1:500-1:5000

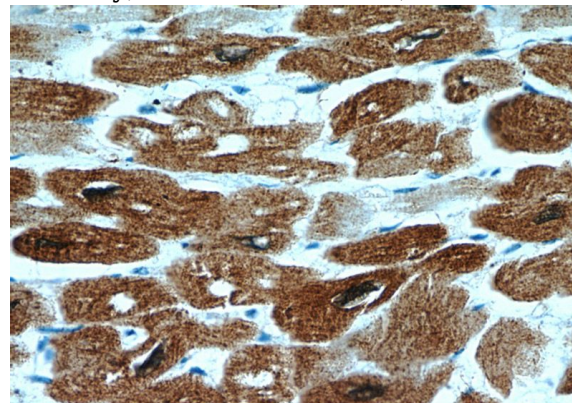
## Validations



human skeletal muscle tissue were subjected to SDS PAGE followed by western blot with Catalog No:111700(HSP27 antibody) at dilution of 1:300



Immunohistochemical of paraffin-embedded human heart using Catalog No:111700(HSP27 antibody) at dilution of 1:50 (under 10x lens)



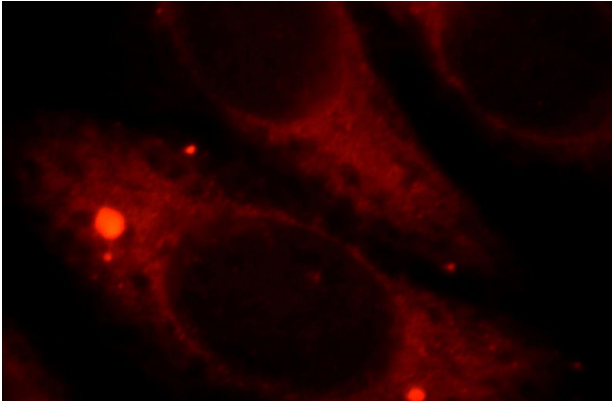
Immunohistochemical of paraffin-embedded human heart using Catalog No:111700(HSP27

# HSPB2 antibody

Catalog Number: 111700

---

antibody) at dilution of 1:50 (under 40x lens)



Immunofluorescent analysis of HepG2 cells, using HSPB2 antibody Catalog No:111700 at 1:25 dilution and Rhodamine-labeled goat anti-rabbit IgG (red).