

Human PLA2G7/PAFAH (His Tag) recombinant protein



Catalog Number: 501700

General Information

Gene Name Synonym

1-alkyl-2-acetyl-glycerophosphocholine esterase; 2-acetyl-1-alkyl-glycerophosphocholine esterase; Group-VIIA phospholipase A2; LDL-associated phospholipase A2; PAF 2-acylhydrolase

Protein Construction

A DNA sequence encoding the human PLA2G7 (Q13093-1) precursor (Met 1-Asn 441) was expressed, with a C-terminal polyhistidine tag.

Organism

Human

Expression Host

Human Cells

QC Testing

Activity

Measured by its ability to cleave a colorimetric peptide substrate, 1O-hexadecyl-2-deoxy-2-thio-Sacetylsnglyceryl-3-phosphoryl choline (2-Thio-PAF), in the presence of 5, 5'-Dithiobis(2-nitrobenzoic acid) (DTNB).

The specific activity is >5000 pmoles/min/ μ g.

Purity

> 88 % as determined by SDS-PAGE

Endotoxin

< 1.0 EU per μ g of the protein as determined by the LAL method

Stability

Samples are stable for up to twelve months from date of receipt at -70°C

Predicted N terminal

Phe 22

Molecular Mass

The secreted recombinant human PLA2G7 comprises 431 amino acids with a predicted molecular mass of 49.2 kDa. As a result of glycosylation, it migrates as an approximately 50-55 kDa band in SDS-PAGE under reducing conditions.

Formulation

Lyophilized from sterile 50mM NaAc, 150mM NaCl, 10% glycerol, pH 5.0

1. 5 % trehalose and mannitol are added as protectants before lyophilization.
2. Please contact us for any concerns or special requirements.

Usage Guide

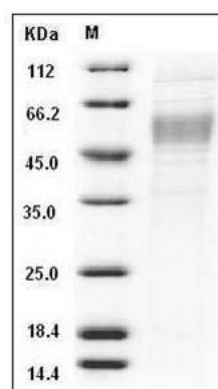
Storage

Store it under sterile conditions at -20°C to -80°C. It is recommended that the protein be aliquoted for optimal storage. Avoid repeated freeze-thaw cycles.

Reconstitution

Adding sterile water, prepare a stock solution of 0.25 mg/ml. Concentration is measured by UV-Vis.

SDS-PAGE



Human PLA2G7 / PAFAH Protein (His Tag) SDS-

Human PLA2G7/PAFAH (His Tag) recombinant protein



Catalog Number: 501700

PAGE