

# ATP5L antibody



Catalog Number: 108300

## Product name

ATP5L antibody

WB: 1:500-1:5000

IHC: 1:20-1:200

## Specificity

Human, Mouse, Rat; other species not tested.

## Antibody description

ATP5L Rabbit Polyclonal antibody. Positive WB detected in mouse liver tissue, HeLa cells, human brain tissue, human skeletal muscle tissue. Positive IHC detected in human kidney tissue, human hepat°Cirrhosis tissue. Observed molecular weight by Western-blot: 11 kDa

## Preparation

This antibody was obtained by immunization of ATP5L recombinant protein (Accession Number: NM\_006476). Purification method: Antigen affinity purified.

## Formulation

PBS with 0.02% sodium azide and 50% glycerol pH 7.3.

## Storage

Store at -20°C. DO NOT ALIQUOT

## Clonality

Polyclonal

## Ig Type

Rabbit IgG

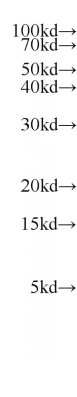
## Applications

ELISA, WB, IHC

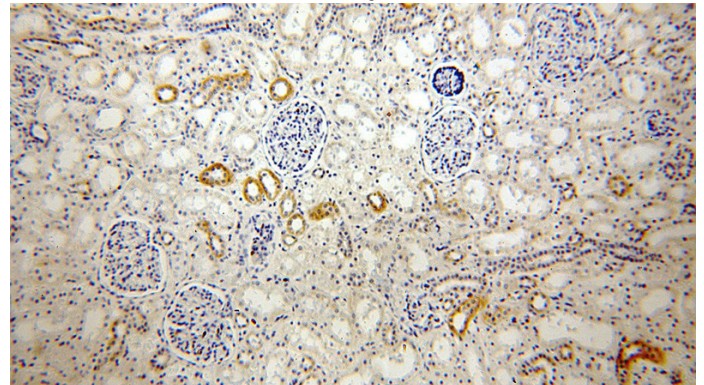
## Dilutions

Recommended Dilution:

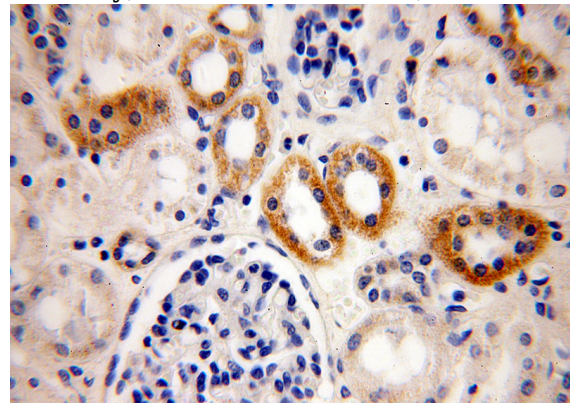
## Validations



mouse liver tissue were subjected to SDS PAGE followed by western blot with Catalog No:108300(ATP5L antibody) at dilution of 1:800



Immunohistochemical of paraffin-embedded human kidney using Catalog No:108300(ATP5L antibody) at dilution of 1:100 (under 10x lens)



Immunohistochemical of paraffin-embedded human kidney using Catalog No:108300(ATP5L antibody) at dilution of 1:100 (under 40x lens)