

NOMO1 antibody

Catalog Number: 113300

Product name

NOMO1 antibody

Specificity

Human, Mouse, Rat; other species not tested.

Antibody description

NOMO1 Rabbit Polyclonal antibody. Positive WB detected in mouse colon tissue, A431 cells, COLO 320 cells, human brain tissue, mouse brain tissue. Positive IP detected in A431 cells. Positive IF detected in MCF-7 cells. Positive IHC detected in human colon tissue, human colon cancer tissue, human pancreas tissue. Observed molecular weight by Western-blot: 135 kDa

Preparation

This antibody was obtained by immunization of NOMO1 recombinant protein (Accession Number: NM_014287). Purification method: Antigen affinity purified.

Formulation

PBS with 0.02% sodium azide and 50% glycerol pH 7.3.

Storage

Store at -20°C. DO NOT ALIQUOT

Clonality

Polyclonal

Ig Type

Rabbit IgG

Applications

ELISA, WB, IF, IHC, IP

Dilutions

Recommended Dilution:

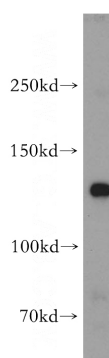
WB: 1:500-1:5000

IP: 1:500-1:5000

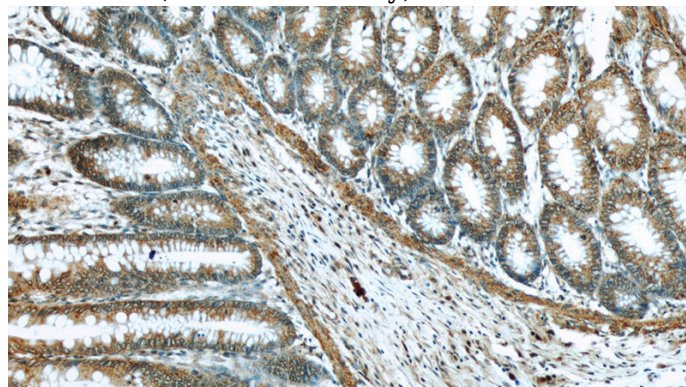
IHC: 1:20-1:200

IF: 1:20-1:200

Validations



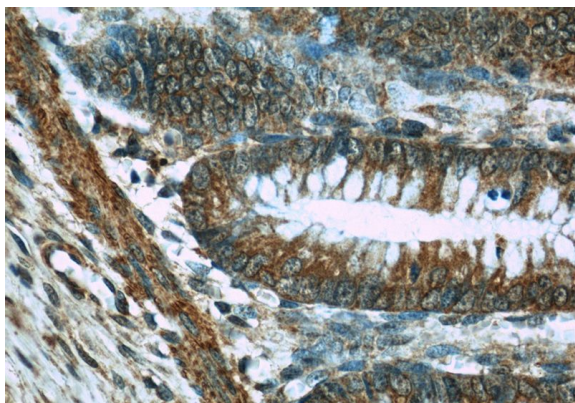
mouse colon tissue were subjected to SDS PAGE followed by western blot with Catalog No:113300(NOMO1 antibody) at dilution of 1:500



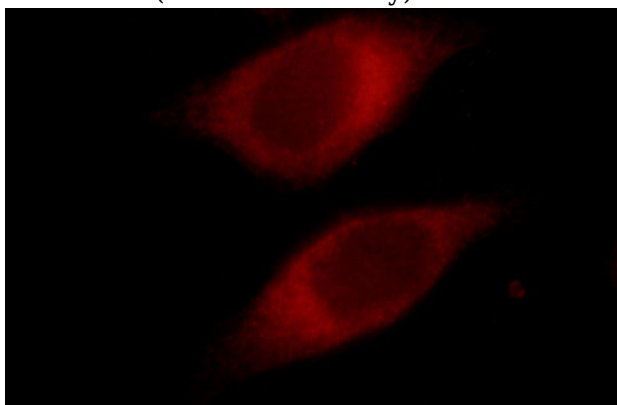
Immunohistochemistry of paraffin-embedded human colon slide using Catalog No:113300(NOMO1 Antibody) at dilution of 1:50

NOMO1 antibody

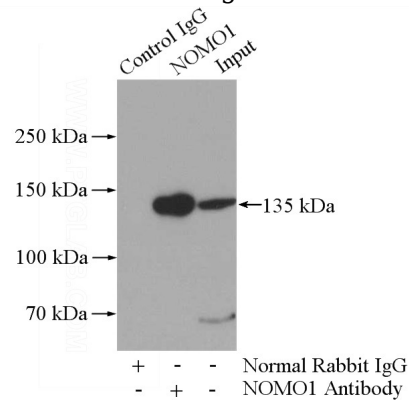
Catalog Number: 113300



Immunohistochemistry of paraffin-embedded human colon slide using Catalog No:113300(NOMO1 Antibody) at dilution of 1:50



Immunofluorescent analysis of MCF-7 cells, using NOMO1 antibody Catalog No:113300 at 1:50 dilution and Rhodamine-labeled goat anti-rabbit



IgG (red).

IP Result of anti-NOMO1 (IP:Catalog No:113300, 4ug; Detection:Catalog No:113300 1:1000) with A431 cells lysate 1520ug.