

Human CANT1 (Fc Tag) recombinant protein



Catalog Number: 503300

General Information

Gene Name Synonym

Apyrase homolog; Putative MAPK-activating protein PM09; Putative NF-kappa-B-activating protein 107

Protein Construction

A DNA sequence encoding the human CANT1 (Q8WVQ1-1) (Gly80-Ile401) was expressed, with the fused Fc region of human IgG1 at the N-terminus.

Organism

Human

Expression Host

Human Cells

QC Testing

Purity

> 90 % as determined by SDS-PAGE

Endotoxin

< 1.0 EU per μg of the protein as determined by the LAL method

Stability

Samples are stable for up to twelve months from date of receipt at -70°C

Predicted N terminal

Glu

Molecular Mass

The recombinant human CANT1/Fc is a disulfide-linked homodimer. The reduced monomer comprises 582 amino acids and has a predicted molecular mass of 64.3 kDa. The apparent molecular mass of the protein is approximately 65 kDa in SDS-PAGE under reducing conditions due to glycosylation.

Formulation

Lyophilized from sterile PBS, pH 7.4

1. 5 % trehalose and mannitol are added as protectants before lyophilization.

2. Please contact us for any concerns or special requirements.

Usage Guide

Storage

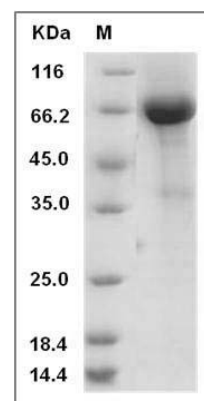
Store it under sterile conditions at -20°C to -80°C .

It is recommended that the protein be aliquoted for optimal storage. Avoid repeated freeze-thaw cycles.

Reconstitution

Adding sterile water, prepare a stock solution of 0.25 mg/ml. Concentration is measured by UV-Vis.

SDS-PAGE



Human CANT1 Protein (Fc Tag) SDS-PAGE