

# LPCAT1 antibody



Catalog Number: 112300

## Product name

LPCAT1 antibody

## Specificity

Human, Mouse, Rat; other species not tested.

## Antibody description

LPCAT1 Rabbit Polyclonal antibody. Positive IHC detected in human colon cancer tissue, human lung cancer tissue. Positive IF detected in MCF-7 cells. Positive IP detected in mouse brain tissue. Positive WB detected in human lung tissue, mouse brain tissue, mouse lung tissue, mouse spleen tissue, rat brain tissue, rat lung tissue. Observed molecular weight by Western-blot: 59 kDa

## Preparation

This antibody was obtained by immunization of LPCAT1 recombinant protein (Accession Number: BC020166). Purification method: Antigen affinity purified.

## Formulation

PBS with 0.02% sodium azide and 50% glycerol pH 7.3.

## Storage

Store at -20°C. DO NOT ALIQUOT

## Clonality

Polyclonal

## Ig Type

Rabbit IgG

## Applications

ELISA, IF, WB, IP, IHC

## Dilutions

Recommended Dilution:

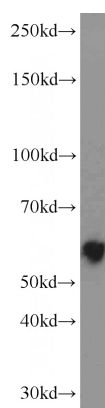
WB: 1:1000-1:10000

IP: 1:1000-1:10000

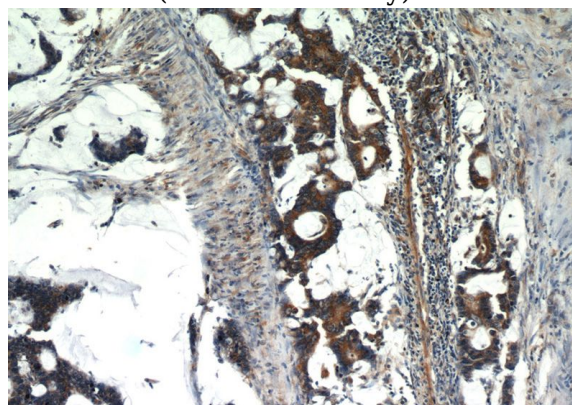
IHC: 1:20-1:200

IF: 1:10-1:100

## Validations



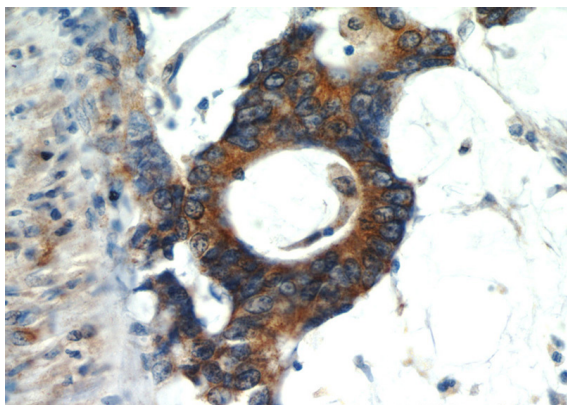
human lung tissue were subjected to SDS PAGE followed by western blot with Catalog No:112300(LPCAT1 antibody) at dilution of 1:4000



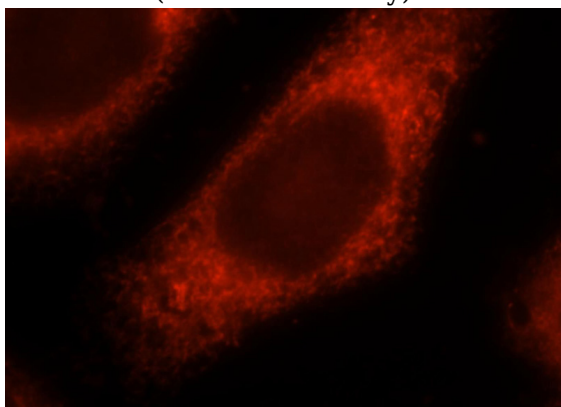
Immunohistochemistry of paraffin-embedded human colon cancer slide using Catalog No:112300(LPCAT1 Antibody) at dilution of 1:100

# LPCAT1 antibody

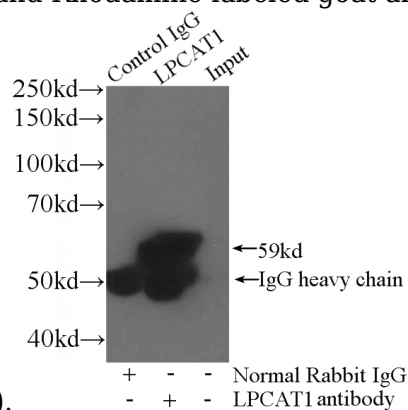
Catalog Number: 112300



Immunohistochemistry of paraffin-embedded human colon cancer slide using Catalog No:112300(LPCAT1 Antibody) at dilution of 1:100



Immunofluorescent analysis of MCF-7 cells, using LPCAT1 antibody Catalog No:112300 at 1:25 dilution and Rhodamine-labeled goat anti-rabbit



IgG (red).

IP Result of anti-LPCAT1 (IP:Catalog No:112300, 3ug; Detection:Catalog No:112300 1:4000) with mouse brain tissue lysate 3600ug.