

# Anti-CD38 antibody



Catalog Number: 102300

## Product name

Anti-CD38 antibody

## Immunogen

[Mouse CD38 \(His Tag\) recombinant protein](#)

## Specificity

Mouse CD38

**No cross-reactivity** in ELISA with Human CD38

## Antibody description

Rabbit monoclonal to CD38

## Preparation

This antibody was obtained from a rabbit immunized with purified, recombinant Mouse CD38 (rM CD38; NP\_031672.2; Leu 45-Thr 304).

## Formulation

0.2 µm filtered solution in PBS with 5% trehalose

## Storage

This antibody can be stored at 2°C-8°C for one month without detectable loss of activity. Antibody products are stable for twelve months from date of receipt when stored at -20°C to -80°C.

Preservative-Free.

Sodium azide is recommended to avoid contamination (final concentration 0.05%-0.1%). It is toxic to cells and should be disposed of properly. Avoid repeated freeze-thaw cycles.

## Clonality

Monoclonal

## Ig Type

Rabbit IgG

## Applications

ELISA, IHC-P

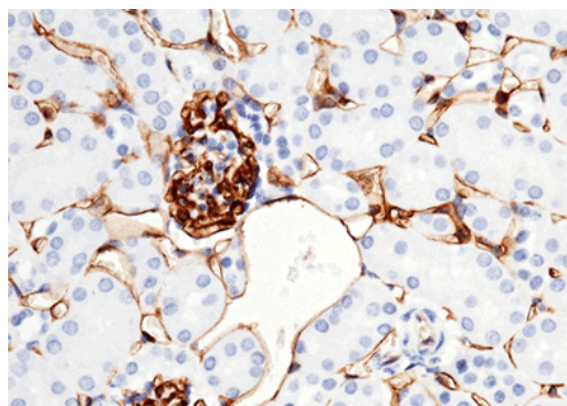
## Dilutions

ELISA: 0.1-0.2 µg/mL

This antibody can be used at 0.1-0.2 µg/mL with the appropriate secondary reagents to detect Mouse CD38. The detection limit for Mouse CD38 is 0.00245 ng/well.

IHC-P: 1-5 µg/mL

## Validations



CD38 Antibody, Rabbit MAb,  
Immunohistochemistry

Immunochemical staining of mouse CD38 in mouse kidney with rabbit monoclonal antibody (2 µg/mL, formalin-fixed paraffin embedded sections). Positive staining was localized to endotheliocyte.