

# Anti-SURF4 Rabbit antibody



Catalog Number: 167600

## Product name

Anti-SURF4 Rabbit antibody

## Specificity

Human, Mouse, Rat

## Antibody description

SURF4 Rabbit monoclonal antibody

## Preparation

Antigen: A synthetic peptide of human SURF4

## Formulation

50nM Tris-Glycine(pH 7.4), 0.15M NaCl, 40%Glycerol, 0.01% sodium azide and 0.05% BSA

## Storage

Store at 4°C short term. Store at -20°C long term. Avoid freeze / thaw cycle.

## Clonality

Monoclonal

## Ig Type

Rabbit IgG

## Applications

WB, ICC/IF, FC

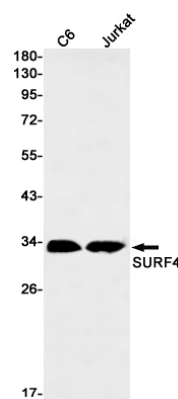
## Dilutions

WB: 1/2000

ICC/IF: 1/20

FC: 1/20

## Validations



Western blot detection of SURF4 in C6, Jurkat cell lysates using SURF4 Rabbit mAb(1:1000 diluted). Predicted band size: 30kDa. Observed band size: 30kDa.