

# SRR antibody



Catalog Number: 115600

## Product name

SRR antibody

## Specificity

Human, Mouse, Rat; other species not tested.

## Antibody description

SRR Rabbit Polyclonal antibody. Positive WB detected in mouse brain tissue, rat brain tissue. Positive IHC detected in human kidney tissue, human heart tissue. Observed molecular weight by Western-blot: 37 kDa

## Preparation

This antibody was obtained by immunization of SRR recombinant protein (Accession Number: XM\_006721566). Purification method: Antigen affinity purified.

## Formulation

PBS with 0.02% sodium azide and 50% glycerol pH 7.3.

## Storage

Store at -20°C. DO NOT ALIQUOT

## Clonality

Polyclonal

## Ig Type

Rabbit IgG

## Applications

ELISA, IHC, WB

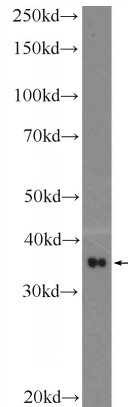
## Dilutions

Recommended Dilution:

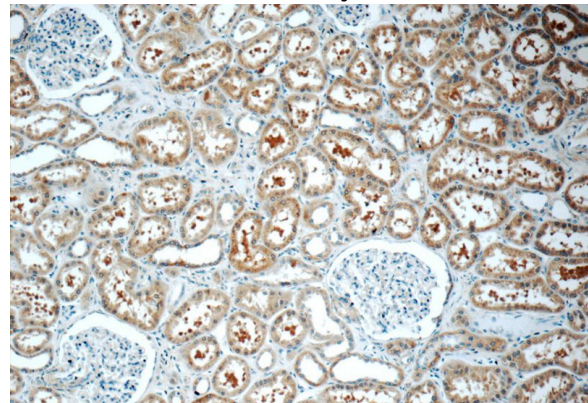
WB: 1:500-1:5000

IHC: 1:20-1:200

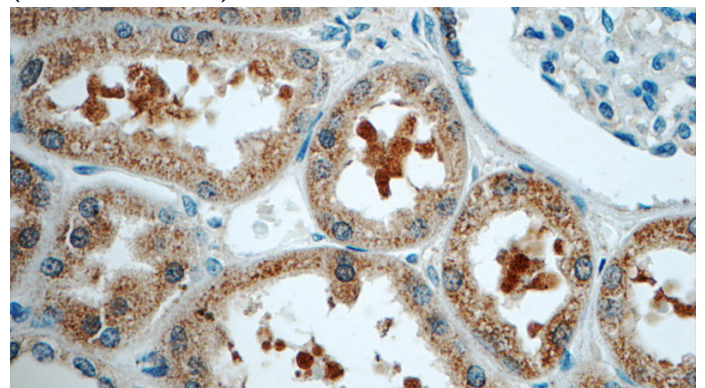
## Validations



mouse brain tissue were subjected to SDS PAGE followed by western blot with Catalog No:115600(SRR Antibody) at dilution of 1:1000



Immunohistochemistry of paraffin-embedded human kidney tissue slide using Catalog No:115600(SRR Antibody) at dilution of 1:50 (under 10x lens)



Immunohistochemistry of paraffin-embedded human kidney tissue slide using Catalog No:115600(SRR Antibody) at dilution of 1:50

# SRR antibody



Catalog Number: 115600

---

(under 40x lens)