

# Anti-ATF4 Rabbit antibody



Catalog Number: 167200

## Product name

Anti-ATF4 Rabbit antibody

IP: 1/50

FC: 1/50

## Specificity

Human, Mouse, Rat

## Antibody description

ATF4 Rabbit polyclonal antibody

## Preparation

Antigen: A synthesized peptide derived from human ATF4

## Formulation

Rabbit IgG in phosphate buffered saline , pH 7.4, 150mM NaCl, 0.02% sodium azide and 50% glycerol.

## Storage

Store at 4°C short term. Store at -20°C long term. Avoid freeze / thaw cycle.

## Clonality

Polyclonal

## Ig Type

Rabbit IgG

## Applications

WB, IHC-P, ICC/IF, IP, FC

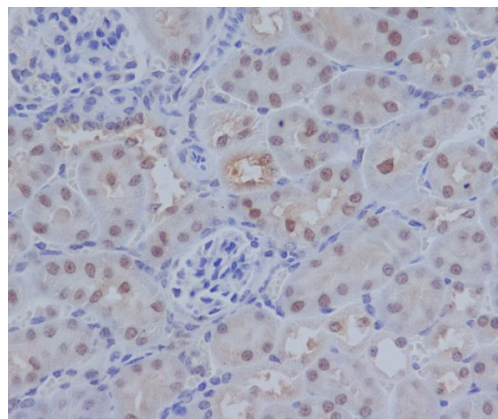
## Dilutions

WB: 1/500-1/1000

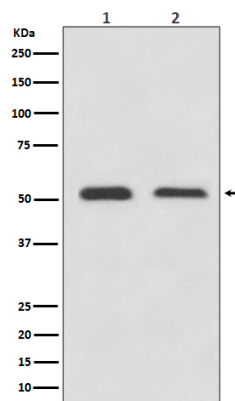
IHC: 1/50-1/200

ICC: 1/100-1/500

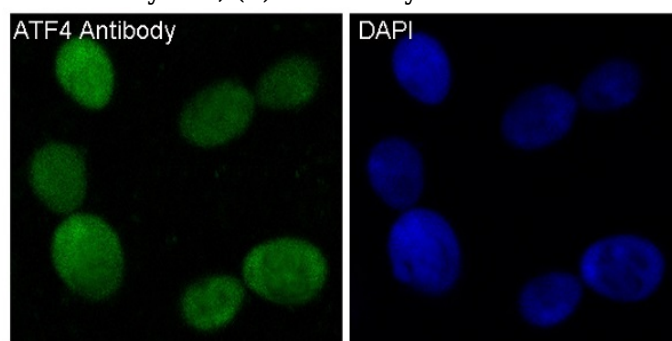
## Validations



Immunohistochemical analysis of paraffin-embedded mouse kidney, using ATF4 Antibody.



Western blot analysis of ATF4 expression in (1) HeLa cell lysate; (2) 3T3 cell lysate.



Immunofluorescent analysis of 293 cells, using ATF4 Antibody.