

# SEPT7 Polyclonal Antibody



Catalog Number: 164200

## Product name

SEPT7 Polyclonal Antibody

## Specificity

Human, Mouse, Rat

## Antibody description

Polyclonal antibody to SEPT7

## Preparation

Antigen: Recombinant fusion protein containing a sequence corresponding to amino acids 307-436 of human SEPT7 (NP\_001011553.2).

## Formulation

PBS with 0.02% sodium azide, 50% glycerol, pH7.3.

## Storage

Store at -20°C. Avoid freeze / thaw cycles.

## Clonality

Polyclonal

## Ig Type

Rabbit IgG

## Applications

WB, IHC, IF

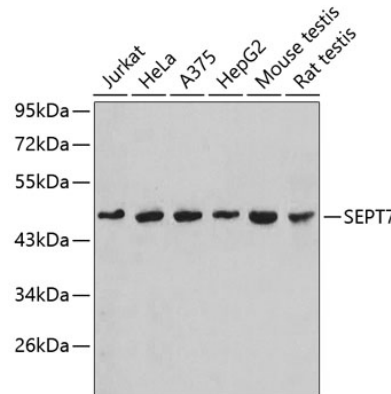
## Dilutions

WB 1:1000 - 1:2000

IHC 1:50 - 1:200

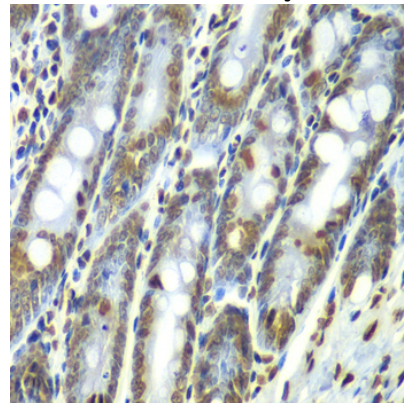
IF 1:50 - 1:100

## Validations



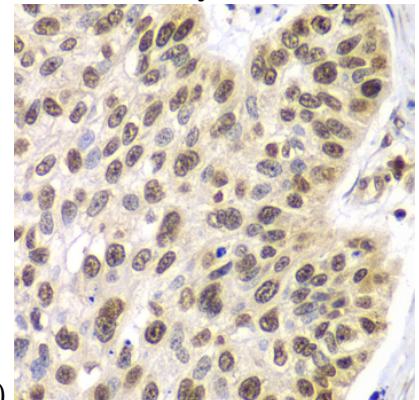
Western blot - SEPT7 Polyclonal Antibody

Western blot analysis of extracts of various cell lines, using SEPT7 antibody. Secondary antibody: HRP Goat Anti-Rabbit IgG (H+L) at 1:10000 dilution. Lysates/proteins: 25ug per lane. Blocking buffer: 3% nonfat dry milk in TBST.



Immunohistochemistry - SEPT7 Polyclonal Antibody

Immunohistochemistry of paraffin-embedded rat Intestine using SEPT7 antibody at dilution of



1:100 (40x lens).

Immunohistochemistry - SEPT7 Polyclonal

# SEPT7 Polyclonal Antibody

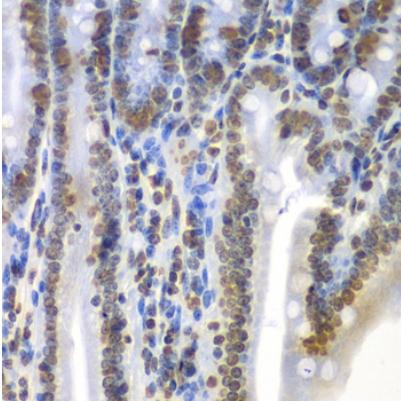


Catalog Number: 164200

---

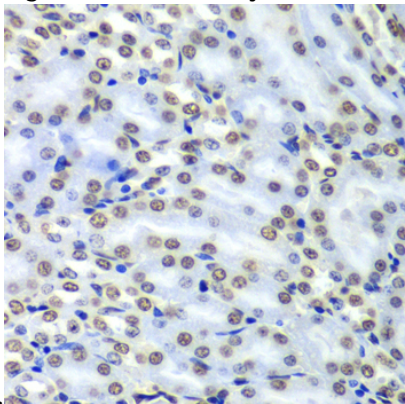
## Antibody

Immunohistochemistry of paraffin-embedded human lung cancer using SEPT7 antibody at dilution of 1:100 (40x lens).



## Immunohistochemistry - SEPT7 Polyclonal Antibody

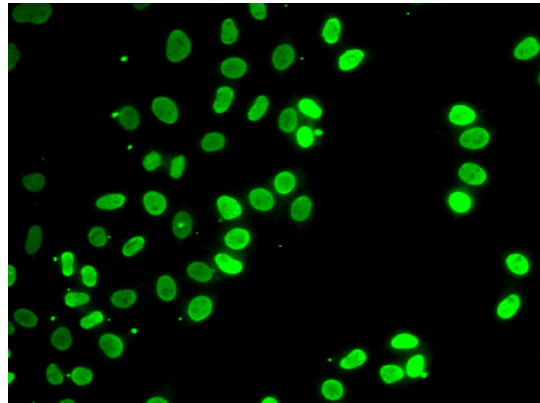
Immunohistochemistry of paraffin-embedded mouse Intestine using SEPT7 antibody at dilution



of 1:100 (40x lens).

## Immunohistochemistry - SEPT7 Polyclonal Antibody

Immunohistochemistry of paraffin-embedded mouse kidney using SEPT7 antibody at dilution of 1:100 (40x lens).



## Immunofluorescence - SEPT7 Polyclonal Antibody

Immunofluorescence analysis of HeLa cells using SEPT7 antibody .