

# Leptin antibody



Catalog Number: 112200

## Product name

Leptin antibody

## Specificity

Human; other species not tested.

## Antibody description

Leptin Rabbit Polyclonal antibody. Positive WB detected in human adipose tissue. Positive IHC detected in human testis tissue, human breast cancer tissue, human liver tissue, human ovary tissue, human placenta tissue. Observed molecular weight by Western-blot: 16 kDa

## Preparation

This antibody was obtained by immunization of Leptin recombinant protein (Accession Number: NM\_000230). Purification method: Antigen affinity purified.

## Formulation

PBS with 0.02% sodium azide and 50% glycerol pH 7.3.

## Storage

Store at -20°C. DO NOT ALIQUOT

## Clonality

Polyclonal

## Ig Type

Rabbit IgG

## Applications

ELISA, WB, IHC

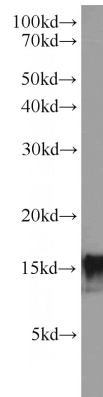
## Dilutions

Recommended Dilution:

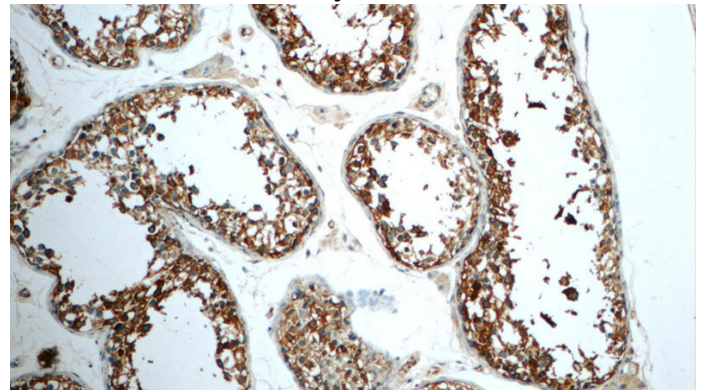
WB: 1:200-1:2000

IHC: 1:20-1:200

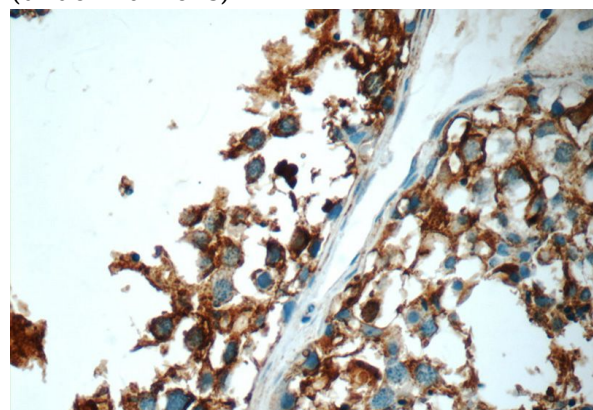
## Validations



human adipose tissue were subjected to SDS PAGE followed by western blot with Catalog No:112200(LEP antibody) at dilution of 1:300



Immunohistochemistry of paraffin-embedded human testis tissue slide using Catalog No:112200(LEP Antibody) at dilution of 1:50 (under 10x lens)



Immunohistochemistry of paraffin-embedded human testis tissue slide using Catalog No:112200(LEP Antibody) at dilution of 1:50

# Leptin antibody



Catalog Number: 112200

---

(under 40x lens)