

Rhesus PD1/PDCD1/CD279 (His Tag) recombinant protein



Catalog Number: 502200

General Information

Gene Name Synonym

Programmed death 1

Protein Construction

A DNA sequence encoding the rhesus PD1 (NP_001107830.1) (Met1-Gln167) was expressed with a polyhistidine tag at the C-terminus.

Organism

Rhesus

Expression Host

Human Cells

QC Testing

Activity

Measured by its ability to bind human B7-H1-Fc(Cat#10084-H02H) in a functional ELISA.

Purity

> 95 % as determined by SDS-PAGE.

Endotoxin

<1.0 EU per μ g protein as determined by the LAL method.

Stability

Samples are stable for up to twelve months from date of receipt at -70°C

Predicted N terminal

Met

Molecular Mass

The recombinant rhesus PD1 consists 178 amino acids and predicts a molecular mass of 20.3 kDa.

Formulation

Lyophilized from sterile PBS, pH 7.4.

1. 5 % trehalose and mannitol are added as protectants before lyophilization.

2. Please contact us for any concerns or special requirements.

Usage Guide

Storage

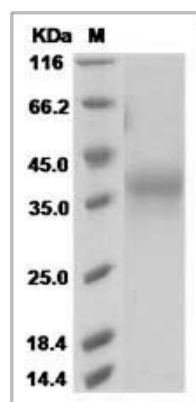
Store it under sterile conditions at -20°C to -80°C.

It is recommended that the protein be aliquoted for optimal storage. Avoid repeated freeze-thaw cycles.

Reconstitution

Adding sterile water, prepare a stock solution of 0.25 mg/ml. Concentration is measured by UV-Vis.

SDS-PAGE



Rhesus PD-1 / CD279 Protein (His Tag) SDS-PAGE