

RPL7A antibody

Catalog Number: 114900

Product name

RPL7A antibody

WB: 1:500-1:5000

IP: 1:500-1:5000

Specificity

Human, Mouse, Rat; other species not tested.

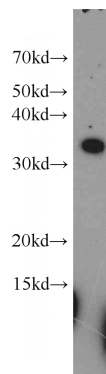
IHC: 1:20-1:200

IF: 1:20-1:200

Antibody description

RPL7A Rabbit Polyclonal antibody. Positive IP detected in mouse kidney tissue. Positive WB detected in MCF7 cells, mouse kidney tissue, mouse liver tissue, rat kidney tissue. Positive IHC detected in human breast cancer tissue. Positive IF detected in HepG2 cells. Observed molecular weight by Western-blot: 30-32 kDa

Validations



Preparation

This antibody was obtained by immunization of RPL7A recombinant protein (Accession Number: NM_000972). Purification method: Antigen affinity purified.

MCF7 cells were subjected to SDS PAGE followed by western blot with Catalog No:114900(RPL7A antibody) at dilution of 1:500

Formulation

PBS with 0.02% sodium azide and 50% glycerol pH 7.3.

Storage

Store at -20°C. DO NOT ALIQUOT

Clonality

Polyclonal

Ig Type

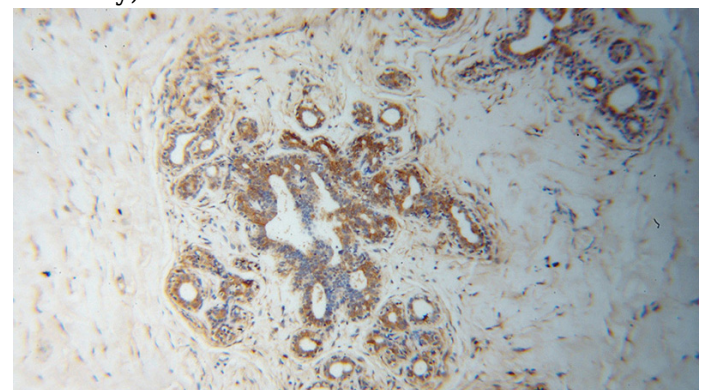
Rabbit IgG

Applications

ELISA, WB, IHC, IF, IP

Dilutions

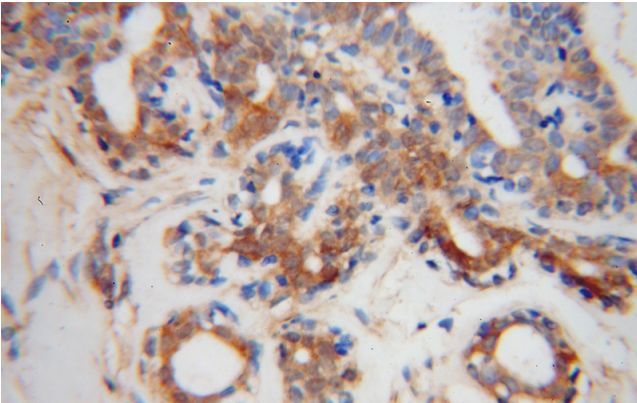
Recommended Dilution:



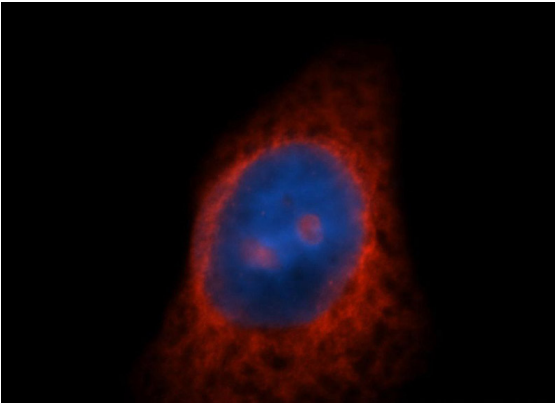
Immunohistochemical of paraffin-embedded human breast cancer using Catalog No:114900(RPL7A antibody) at dilution of 1:100 (under 10x lens)

RPL7A antibody

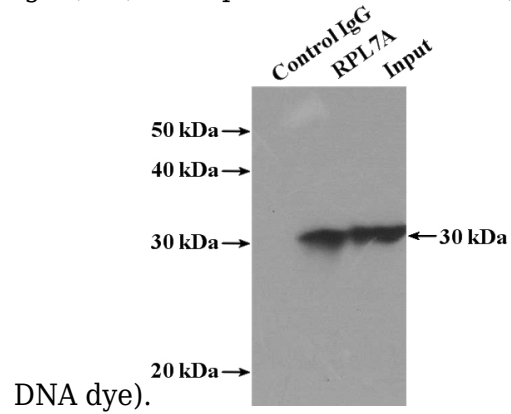
Catalog Number: 114900



Immunohistochemical of paraffin-embedded human breast cancer using Catalog No:114900(RPL7A antibody) at dilution of 1:100 (under 40x lens)



Immunofluorescent analysis of HepG2 cells, using RPL7A antibody Catalog No:114900 at 1:50 dilution and Rhodamine-labeled goat anti-rabbit IgG (red). Blue pseudocolor = DAPI (fluorescent



IP Result of anti-RPL7A (IP:Catalog No:114900, 4ug; Detection:Catalog No:114900 1:1000) with mouse kidney tissue lysate 4000ug.