

# OPRK1 Polyclonal Antibody



Catalog Number: 161900

## Product name

OPRK1 Polyclonal Antibody

## Specificity

Human, Mouse, Rat

## Antibody description

Polyclonal antibody to OPRK1

## Preparation

Antigen: A synthetic peptide corresponding to a sequence within amino acids 300 to the C-terminus of human OPRK1 (NP\_000903.2).

## Formulation

PBS with 0.02% sodium azide, 50% glycerol, pH7.3.

## Storage

Store at -20°C. Avoid freeze / thaw cycles.

## Clonality

Polyclonal

## Ig Type

Rabbit IgG

## Applications

WB, IHC, IF

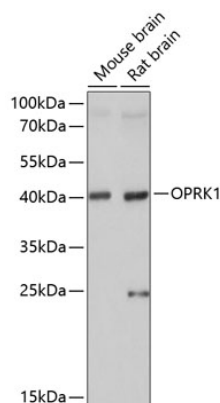
## Dilutions

WB 1:500 - 1:2000

IHC 1:50 - 1:200

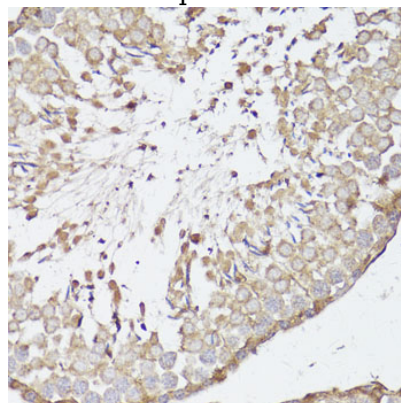
IF 1:50 - 1:200

## Validations



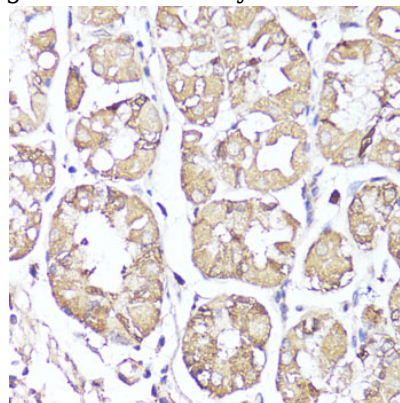
Western blot - OPRK1 Polyclonal Antibody

Western blot analysis of extracts of various cell lines, using OPRK1 antibody at 1:1000 dilution. Secondary antibody: HRP Goat Anti-Rabbit IgG (H+L) at 1:10000 dilution. Lysates/proteins: 25ug per lane. Blocking buffer: 3% nonfat dry milk in TBST. Detection: ECL Basic Kit. Exposure time: 5s.



Immunohistochemistry - OPRK1 Polyclonal Antibody

Immunohistochemistry of paraffin-embedded rat testis using OPRK1 antibody at dilution of 1:100



(40x lens).

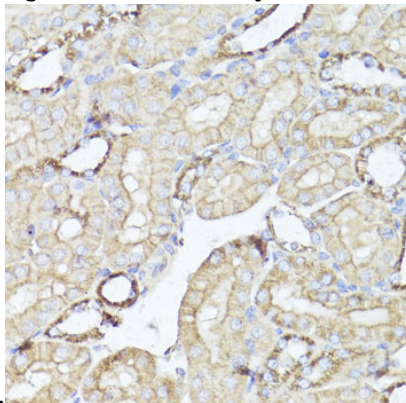
# OPRK1 Polyclonal Antibody

Catalog Number: 161900

---

## Immunohistochemistry - OPRK1 Polyclonal Antibody

Immunohistochemistry of paraffin-embedded human stomach using OPRK1 antibody at dilution



of 1:100 (40x lens).

## Immunohistochemistry - OPRK1 Polyclonal Antibody

Immunohistochemistry of paraffin-embedded mouse kidney using OPRK1 antibody at dilution of 1:100 (40x lens).