

GCDFP-15/PIP antibody



Catalog Number: 110900

Product name

GCDFP-15/PIP antibody

Specificity

Human; other species not tested.

Antibody description

GCDFP-15/PIP Rabbit Polyclonal antibody.
Positive IHC detected in human skin tissue,
human breast cancer tissue, human breast tissue.

Preparation

This antibody was obtained by immunization of
GCDFP-15/PIP recombinant protein (Accession
Number: NM_002652). Purification method:
Antigen affinity purified.

Formulation

PBS with 0.1% sodium azide and 50% glycerol pH
7.3.

Storage

Store at -20°C. DO NOT ALIQUOT

Clonality

Polyclonal

Ig Type

Rabbit IgG

Applications

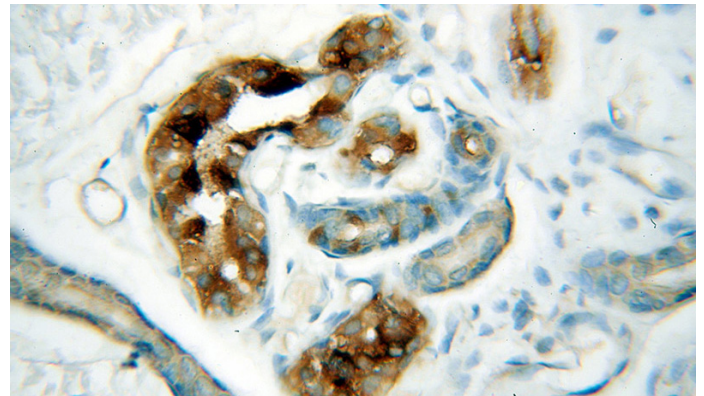
ELISA, IHC

Dilutions

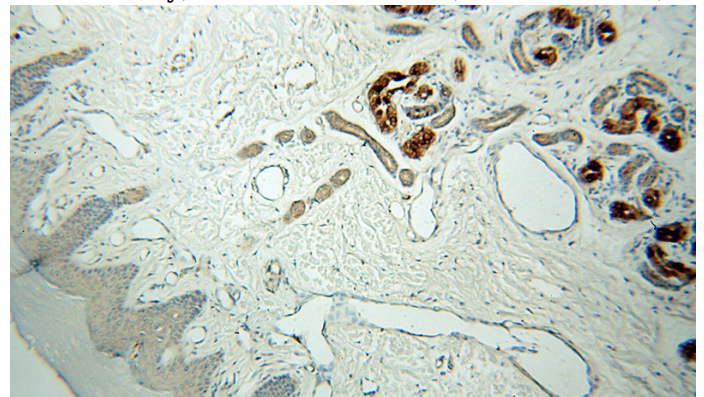
Recommended Dilution:

IHC: 1:20-1:200

Validations



Immunohistochemical of paraffin-embedded
human skin using Catalog No:110900(GCDFP-15,
PIP antibody) at dilution of 1:50 (under 40x lens)



Immunohistochemical of paraffin-embedded
human skin using Catalog No:110900(GCDFP-15,
PIP antibody) at dilution of 1:50 (under 10x lens)