

Bile salt-activated lipase antibody



Catalog Number: 108500

Product name

Bile salt-activated lipase antibody

ELISA, WB, IF

Specificity

Human, Mouse, Rat; other species not tested.

Dilutions

Recommended Dilution:

WB: 1:500-1:5000

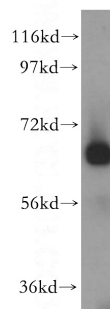
IF: 1:10-1:100

Antibody description

Bile salt-activated lipase Rabbit Polyclonal antibody. Positive WB detected in human liver tissue, HeLa cells, mouse heart tissue, mouse liver tissue. Positive IF detected in HeLa cells.

Observed molecular weight by Western-blot: 67 kDa

Validations



Preparation

This antibody was obtained by immunization of Bile salt-activated lipase recombinant protein (Accession Number: BC042510). Purification method: Antigen affinity purified.

human liver tissue were subjected to SDS PAGE followed by western blot with Catalog No:117145(CEL antibody) at dilution of 1:500

Formulation

PBS with 0.02% sodium azide and 50% glycerol pH 7.3.

Storage

Store at -20°C. DO NOT ALIQUOT

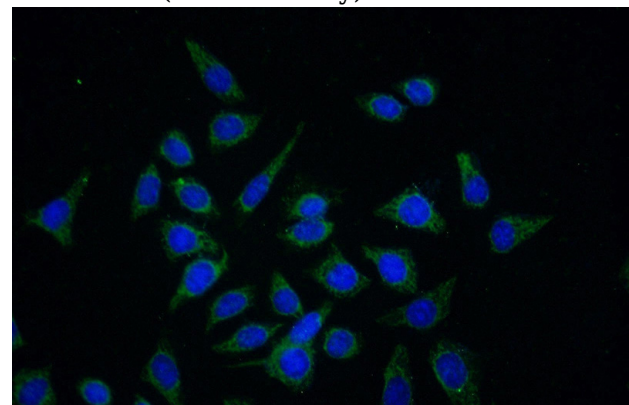
Clonality

Polyclonal

Ig Type

Rabbit IgG

Applications



Immunofluorescent analysis of (-20oc Ethanol) fixed HeLa cells using Catalog No:117145(CEL Antibody) at dilution of 1:25 and Alexa Fluor 488-conjugated AffiniPure Goat Anti-Rabbit IgG(H+L)