

CDC27; APC3 antibody



Catalog Number: 109100

Product name

CDC27; APC3 antibody

IP: 1:200-1:2000

IHC: 1:20-1:200

Specificity

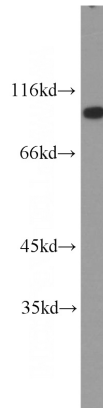
Human, Mouse, Rat; other species not tested.

IF: 1:20-1:200

Antibody description

CDC27; APC3 Rabbit Polyclonal antibody. Positive IF detected in SH-SY5Y cells. Positive IHC detected in human prostate cancer tissue. Positive IP detected in K-562 cells. Positive WB detected in K-562 cells, Jurkat cells. Observed molecular weight by Western-blot: 92kd

Validations



Preparation

This antibody was obtained by immunization of CDC27; APC3 recombinant protein (Accession Number: NM_001114091). Purification method: Antigen affinity purified.

K-562 cells were subjected to SDS PAGE followed by western blot with Catalog No:109100(CDC27; APC3 antibody) at dilution of 1:600

Formulation

PBS with 0.1% sodium azide and 50% glycerol pH 7.3.

Storage

Store at -20°C. DO NOT ALIQUOT

Clonality

Polyclonal

Ig Type

Rabbit IgG

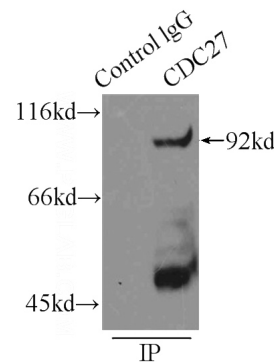
Applications

ELISA, WB, IHC, IF, IP

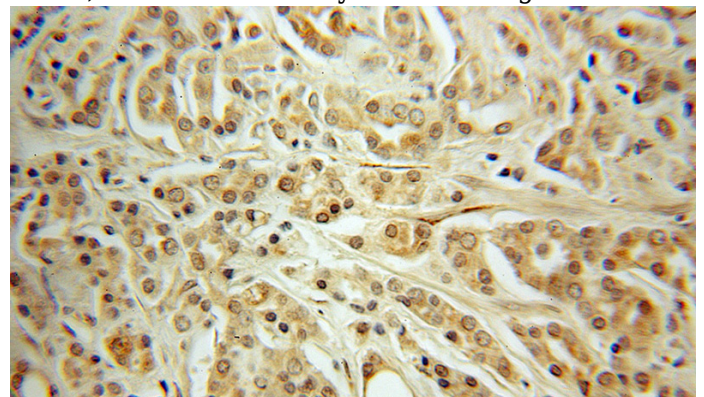
Dilutions

Recommended Dilution:

WB: 1:200-1:2000



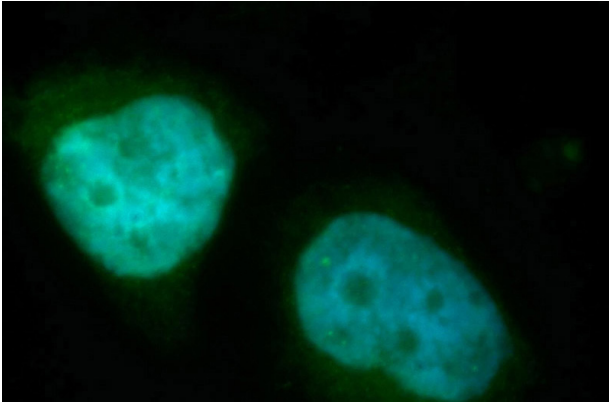
IP Result of anti-CDC27; APC3 (IP:Catalog No:109100, 3ug; Detection:Catalog No:109100 1:600) with K-562 cells lysate 11000ug.



CDC27; APC3 antibody

Catalog Number: 109100

Immunohistochemical of paraffin-embedded human prostate cancer using Catalog No:109100(CDC27; APC3 antibody) at dilution of 1:50 (under 10x lens)



Immunofluorescent analysis of SH-SY5Y cells, using CDC27 antibody Catalog No:109100 at 1:50 dilution and FITC-labeled donkey anti-rabbit IgG(green). Blue pseudocolor = DAPI (fluorescent DNA dye).